

An aerial photograph of a tropical coastline, featuring a lush green island in the foreground and a calm blue sea. A white rectangular frame is superimposed over the center of the image. The letter 'W' is positioned at the top left corner of the frame, and the text 'THE PORTFOLIO' is at the bottom center.

W

THE PORTFOLIO



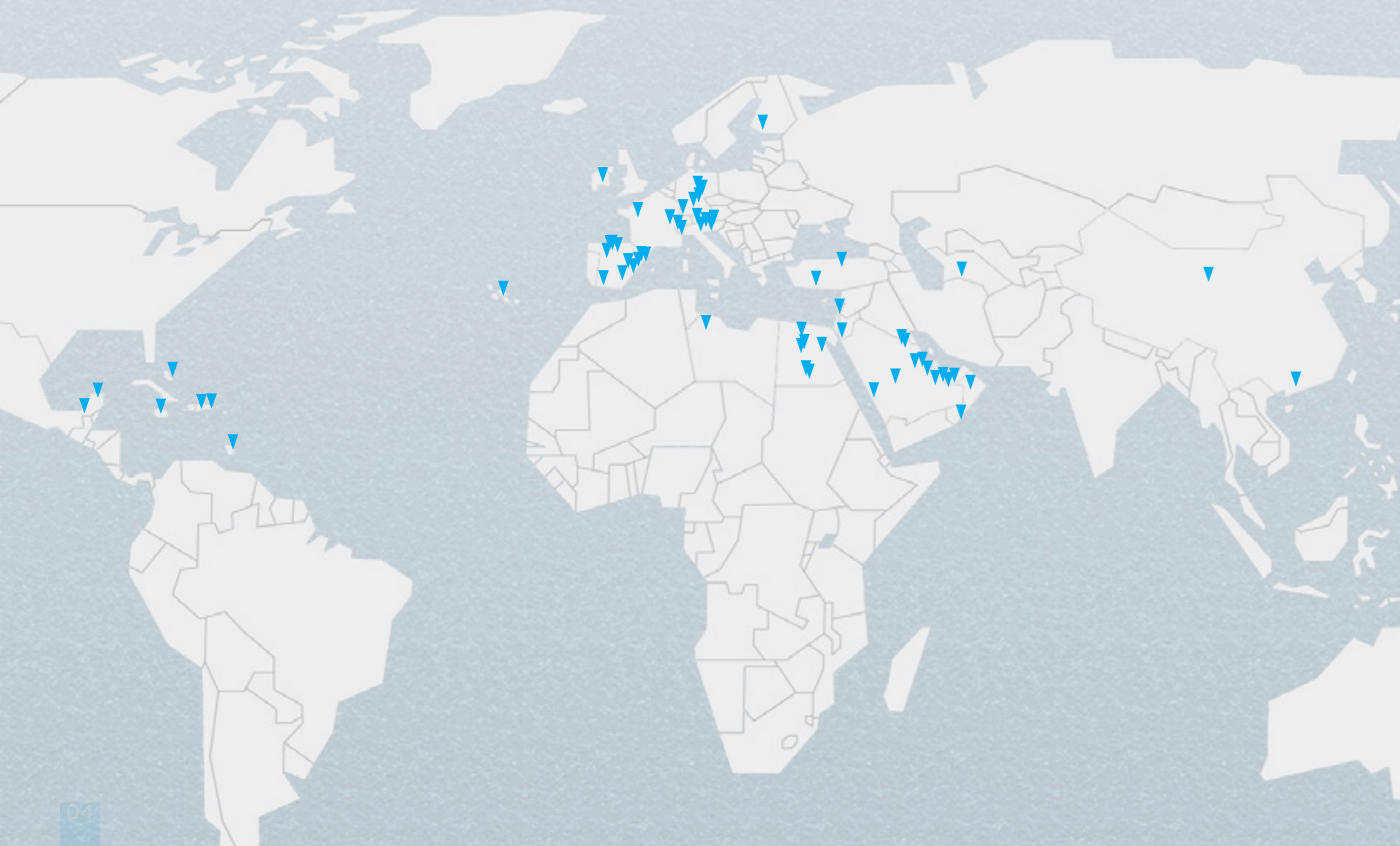
The Story

The Wellness is a leading SPA specialist in the MEA region responsible for the development of fascinating and innovative SPA projects.

The company was founded in 2007 in Dubai and has been involved in various high end projects throughout the region.

The following factors were and still are responsible for The Wellness success in the planning and realization of SPA projects: Creativity, innovation, expertise and courage.

REFERENCES



U.A.E

- Abu Dhabi Country Club, Abu Dhabi
- ADIA Health & Wellness Club, Abu Dhabi
- Al Bustan Complex, Abu Dhabi
- Armaam Al Reem Island, Abu Dhabi
- Fairmont Bab Al Bahr, Abu Dhabi
- Four Seasons Abu Dhabi, Abu Dhabi
- Mövenpick Hotels & Resorts, Yas Island, Abu Dhabi
- Anantara Resort & Spa, Palm Jumeirah Dubai.
- Cayan Tower, Dubai Marina
- Damac 4, Dubai • Damac Maison, Dubai
- Damac Burjside Boulevard, Dubai
- Dubai Pearl – The Pearl of Life, Dubai
- Lapita Hotel, Dubai Parks, Dubai
- Hyatt, Palm Jumeirah
- Mirdiff Mall, Dubai
- My Triton, Platinum Yachts, Dubai
- Oceana, Palm Jumeirah
- Private Spa Palace, Dubai
- Private Villa, Palm Jumeirah
- The Cube, Dubai
- The St. Regis Al Habtoor Polo Resort & Club, Dubai
- Tiara/Essque United Towers, Dubai
- Viceroy, Palm Jumeirah
- Viceroy, JVC Dubai
- W Hotel, Palm Jumeirah, Dubai

- Waldorf Astoria, Palm Jumeirah
- Westin Hotel, Habtoor City, Dubai
- Khatt Hot Springs, Ras Al Khaimah
- Sheraton, Sharjah
- Al Mleiha Bed & Breakfast, Sharjah

QATAR

- Al Jasra Boutique Hotel, Doha
- Al Messila Hotel Resort, Doha
- Solis Hotel Doha
- The Gate of Life, Doha
- West Bay Palace, Doha
- Le Mirage, Qatar

KSA

- Kempinski, Jeddah
- Kempinski, Riyadh
- Luthan Hotel & Spa, Riyadh
- Multiple Private Spas for the Saudi Royal Family
- Rocco Forte, Jeddah
- Sheraton Dammam, Dammam

OMAN

- Crowne Plaza, Muscat
- Mövenpick Hotels & Resorts, Salalah

KUWAIT

- Al Corniche Club, Kuwait
- Mövenpick Hotels & Resorts, Al Bidaa

LEBANON

- Lifestyle & Fitness, Al Mada Towers, Beirut
- Mövenpick Hotels & Resorts, Beirut

EGYPT

- Crowne Plaza, Sharm El Sheikh
- Emaar Marassi, North Coast
- Le Meridien Gizeh, Gizeh
- Luxor Hilton, Luxor
- Mövenpick Hotels & Resorts, Elephantine Island, Aswan
- Ritz Carlton, Cairo • St. Regis, Cairo

JORDAN

- Hilton Jordan Gate, Amman
- Mövenpick Hotels & Resorts, Dead Sea

LIBYA

- Seven Star Hotel, Tripoli

BAHRAIN

- The Domain Hotel Manama

TURKMENISTAN

- Private Palace, Ashgabat

TURKEY

- Belpark Palace Hotel/Belek, Turkey

REFERENCES

- AUSTRIA**
- **Mohr Life Resort**/Lermoos, Austria
 - **Hotel Jagdhof**/Neustift im Stubaital, Austria
 - **Wellness Residenz Schalber**/Serfaus, Austria
 - **Hotel Tirolerhof**/Zell am See, Austria

- AZERBAIJAN**
- **Gazeli House**/ Baku

- BAHAMAS**
- **Atlantis Resort**/Paradise Island, Bahamas

- BARBADOS**
- **Sandy Lane Resort**/St. James, Barbados

- CHINA**
- **Four Seasons**/ Guangzhou, China
 - **Kempinski Hotel Yinchuan**/China

- DOMINICAN REPUBLIC**
- **Hotel Gran Bahia Principe Cayacoa**/Samaná, Dominican Republic
 - **Hotel Gran Bahia Principe Cayo Levantado**/Samaná, Dominican Republic
 - **Hotel Gran Bahia Principe El Portillo**/Samaná, Dominican Republic

- MEXICO**
- **Hacienda Vista Real Villas & Spa**/Riviera Maya, Mexico
 - **Silver Sand**/Cancún, Mexico

- FINLAND**
- **Starwood Kämp Hotel**/Helsinki, Finland

- GERMANY**
- **Tropical Islands**/Belin, Germany
 - **Hotel Sackman**/Baiersbronn, Germany
 - **Spa-Aladin**/Geretsried, Germany
 - **Holmes Place Berlin**/Berlin, Germany
 - **Bayerwaldhof**/Bad Kötzing, Germany

- ITALY**
- **Hotel Brun**/Mailand, Italy

- IRELAND**
- **Radisson Blu Farnham Estate Hotel**/Cavan, Ireland

- JAMAICA**
- **Gran Bahia Principe Jamaica**/Runaway Bay, Jamaica

- PORTUGAL**
- **Sheraton Oporto**/Porto, Portugal
 - **Solverde**/Porto, Portugal
 - **Aquapura Duero**/Samodães, Portugal
 - **Suites Alba (Luis Figo)**/Carvoeiro, Portugal
 - **Furnas Spa Hotel**/Furnas, Azores

- FRANCE**
- **Marriott Village d’Ile-de-France**/Romainvilliers, France

- SPAIN**
- **Denia Marriott La Sella Golf Resort & Spa**/Denia, Spain
 - **Hotel Fencia Prestige Suites & Spa**/Ibiza, Spain
 - **Gran Hotel Ibiza**/Ibiza, Spain
 - **Grupotel Parc Natural & Spa**/Mallorca, Spain
 - **Hotel Nixe Palace**/Mallorca, Spain
 - **Marriott Son Antem Golf Resort & Spa**/Mallorca, Spain
 - **Grupotel Valparaiso Palace**/Mallorca, Spain
 - **El Bulli Hazienda Benazuza**/Sevilla, Spain
 - **Hotel Botanico Tenerife**/Tenerife, Spain
 - **Read’s Hotel & Spa**/Mallorca, Spain

- SWITZERLAND**
- **Panorama**/Feusisberg, Switzerland
 - **Holmes Place Zurich**/Zurich, Switzerland

MANY MORE....

WHO WE WORK WITH



HOW WE DO IT

CONCEPT

VISION

- Strategic conceptual planning
- Vision to define SPA philosophy
- Space Program accordingly to the above

CONCEPT

- Research & collection of Mood Images for possible design direction
- Concept Design Layout, scale 1:100
- Circulation Diagram

FINANCIAL FORECAST

Report with Assumptions, Considerations and Recommendations:

- Cost Estimation on Investment
- Competition Analysis
- SWOT Analysis
- P&L 5 years
- Cash Flows
- ROI

SCHEMATIC

3D VISUALIZATIONS

INTERIOR & ARCHITECTURAL DESIGN

- General layout
- Section(s)/elevation(s)

MEP ASSISTANCE

- Reflecting ceiling plan
- Ceiling heights
- Water supply layout (Only cold/hot water location, pipe size)
- Drainage layout (Only location, size)
- Ventilation layout (Only location of supply and return, room temperature range, airflow, rate and speed)
- Power (Only location of power supply)
- Sound (Only location speakers and source of sound system, location sound control plate)
- Lighting (Only position and type of light, defining control zones)
- Telephone and data (Only location)

DETAILED

MATERIAL SAMPLE BOARDS

SPECIFICATIONS & SCHEDULES

- Architectural & Interior Design
- Spa Equipment Planning

INTERIOR & ARCHITECTURAL DESIGN

- General layout
- Screed layout
- Floors & walls finishes layout(s)
- Furnishing positioning layout (fixed and loose furniture)
- Joinery works incl. ironmongery and glazier works
- Section(s)/elevation(s) and details
- Doors and windows

EQUIPMENT PLANNING

SCHEMATIC ARCHITECTURAL & TECHNICAL EQUIPMENT PLANNING

- Overview plan
- MEP interfaces (For sanitary, heating, ventilation and electric will be clearly marked in the plans in order to provide the basis for all connection work related to the MEP)
- Consumption list (relevant energy supply & consumption data for the technical specialist spa units in view of sanitary, heating, ventilation and electrical requirements)

DETAILED ARCHITECTURAL & TECHNICAL EQUIPMENT PLANNING

- Architectural & Technical Detail Planning: Architectural Detail Drawings (Plans, Elevations, Floor Details); Technical Detail Drawings (Plans, Sections); Plant room/technical room details; MEP Drawings of SPA Equipment; Documentation (Energy consumption list, technical data sheets)

POOL & WATER FEATURES

Design

- Architectural detail drawings
- Pool Plan and sections
- Technical detail drawings
- Plant room/Technical room Details
- MEP drawings
- Documentation
- Technical data sheets
- Sections and pipe drawings
- Filtration and water treatment
- Green products

Pool Structure

Therapy pools and water features exclusive functions

WET AREA

CLEANSING

- Hammam
- Rasouls
- Moroccan Bath
- Scrub Rooms

HEAT & ICE EXPERIENCES

- Saunas
- Infrared Cabins
- Steam rooms
- Ice Fountains
- Cold/Snow Rooms

WATER FEATURES

- Vitality Pools
- Plunge Pools
- Flotation Pools
- Kneipp Therapies
- Experience Showers
- River Walks

INHALATION ROOMS

- Mineral (Salt)
- Local Herbs Or Plants

MEDITATION & RELAXATION

- Sensory Loungers
- Sleeping Pods
- Meditation
- Heated Loungers

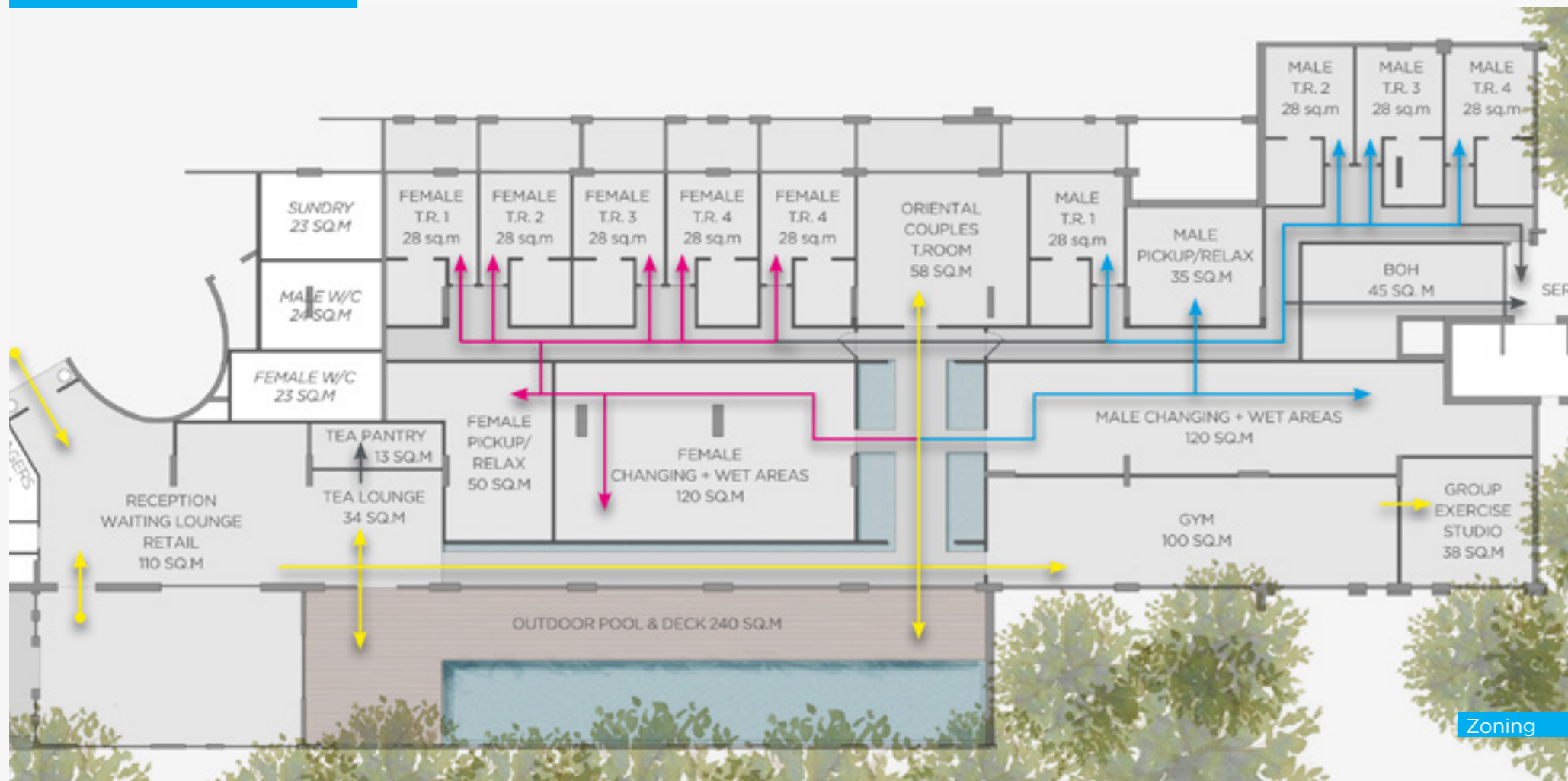
CONCEPT Phase

VISION

- Strategic conceptual planning
- Vision to define SPA philosophy
- Space Program accordingly to the above

CONCEPT

- Research & collection of Mood Images for possible design direction
- Concept Design Layout, scale 1:100
- Circulation Diagram



Zoning

1. FEMALE SALON.

Hair Salon & Manicure-Pedicure

2. FEMALE SPA ARRIVAL AREA

Juice Bar & Seating area
Reception Desk & Waiting area
Retail Lounge

3. FEMALE CHANGING AREA

4. FEMALE GYM

5. FEMALE COURTYARD

Vitality Pool
Pick-up & Social area

6. FEMALE THERMAL AREA

Sauna
Experience showers
Ice Fountain
Steam
Rhassoul
Hamman

7. FEMALE TREATMENT ROOMS & DEEP RELAX

8. FEMALE STAFF AREA

9. MALE BARBER

10. MALE ARRIVAL AREA

Reception Desk & Waiting area
Retail Lounge

11. MALE CHANGING AREA

12. MALE GYM

13. MALE «COURTYARD»

Outdoor Garden & Pick up area

14. MALE THERMAL AREA

Sauna
Experience showers
Ice Fountain
Steam
Hamman

15. MALE TREATMENT ROOMS & DEEP RELAX

16. MALE STAFF AREA

17. TECHNICAL ROOMS



Layout



Conceptual Sketches



Conceptual Sketches



SCHEMATIC

P h a s e

3D VISUALIZATIONS INTERIOR & ARCHITECTURAL DESIGN

- General layout
- Section(s)/elevation(s)

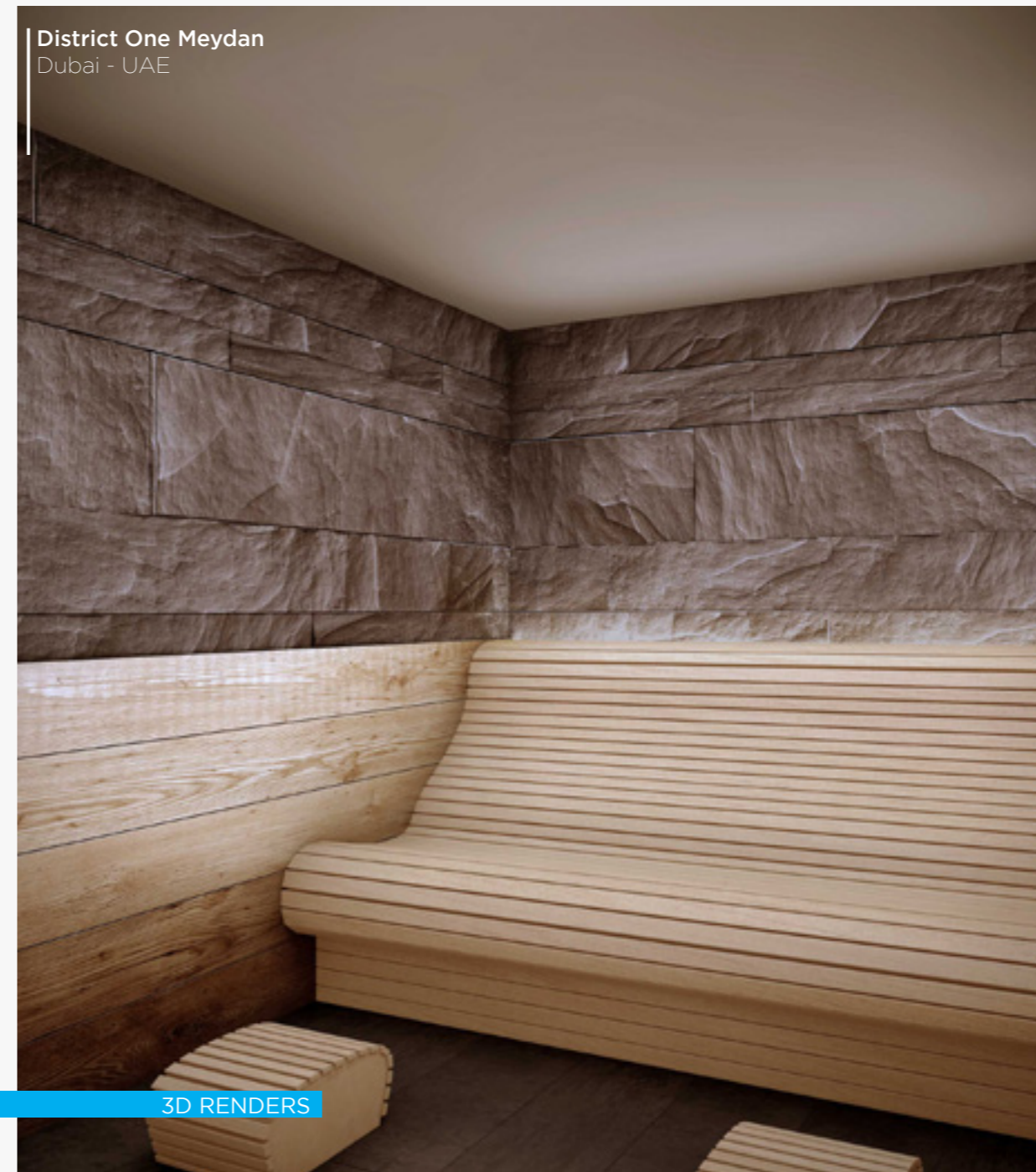
MEP ASSISTANCE

- Reflecting ceiling plan
- Ceiling heights
- Water supply layout (Only cold/hot water location, pipe size)
- Drainage layout (Only location, size)
- Ventilation layout (Only location of supply and return, room temperature range, airflow, rate and speed)
- Power (Only location of power supply)
- Sound (Only location speakers and source of sound system, location sound control plate)
- Lighting (Only position and type of light, defining control zones)
- Telephone and data (Only location)





Le Mirage City Walk
Doha - Qatar



District One Meydan
Dubai - UAE



St. Regis AL Habtoor Polo Ranch
Dubai - UAE

3D RENDERS

3D RENDERS



3D RENDERS

Gazelli House
Baku - Azerbaijan



St.Regis Hotel
Cairo - Egypt



Gazelli House
Baku - Azerbaijan

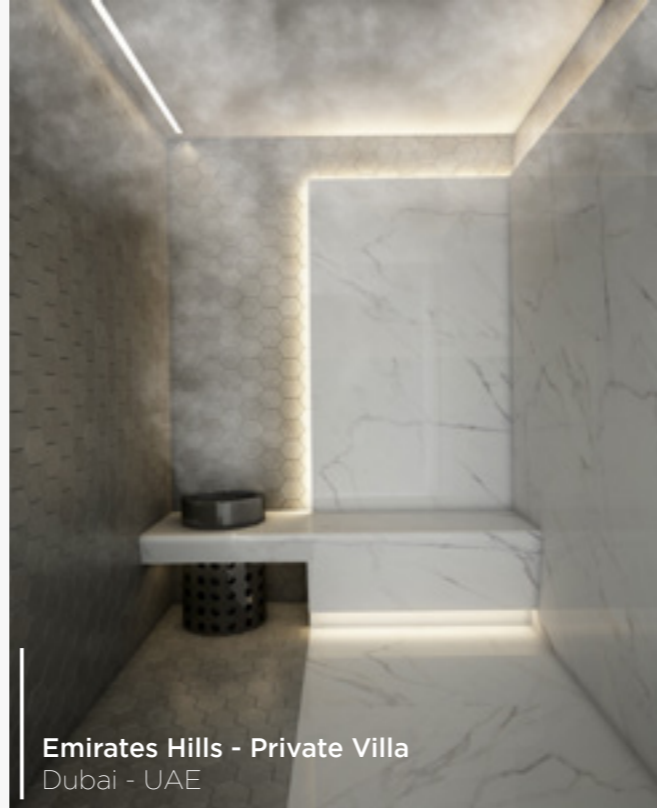


Palm Jumeirah Private Villa
Dubai - UAE

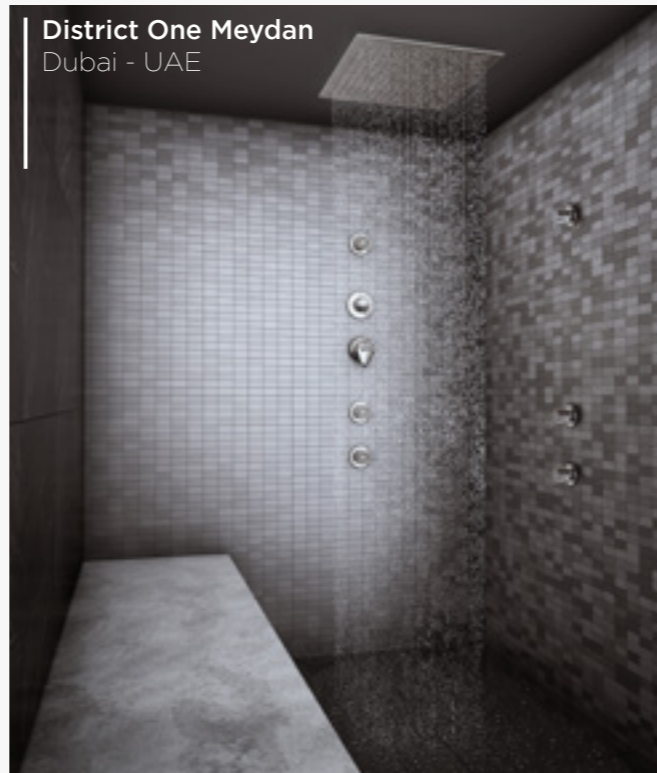
3D RENDERS



Al Mleiha Desert Boutique
Sharjah - UAE



Emirates Hills - Private Villa
Dubai - UAE



District One Meydan
Dubai - UAE



Le Mirage City Walk
Doha - Qatar

SCHEMATIC

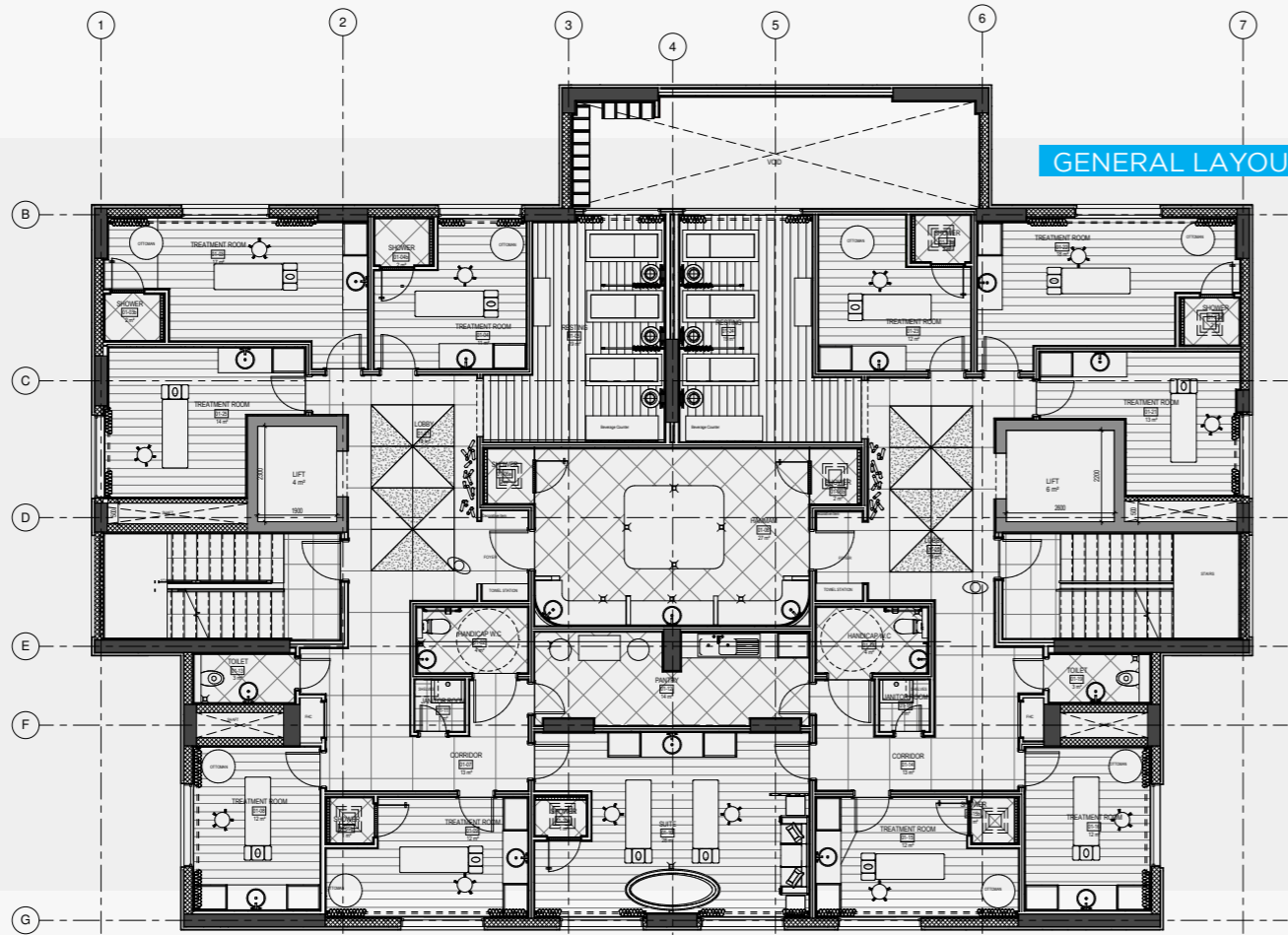
P h a s e

3D VISUALIZATIONS
INTERIOR & ARCHITECTURAL DESIGN

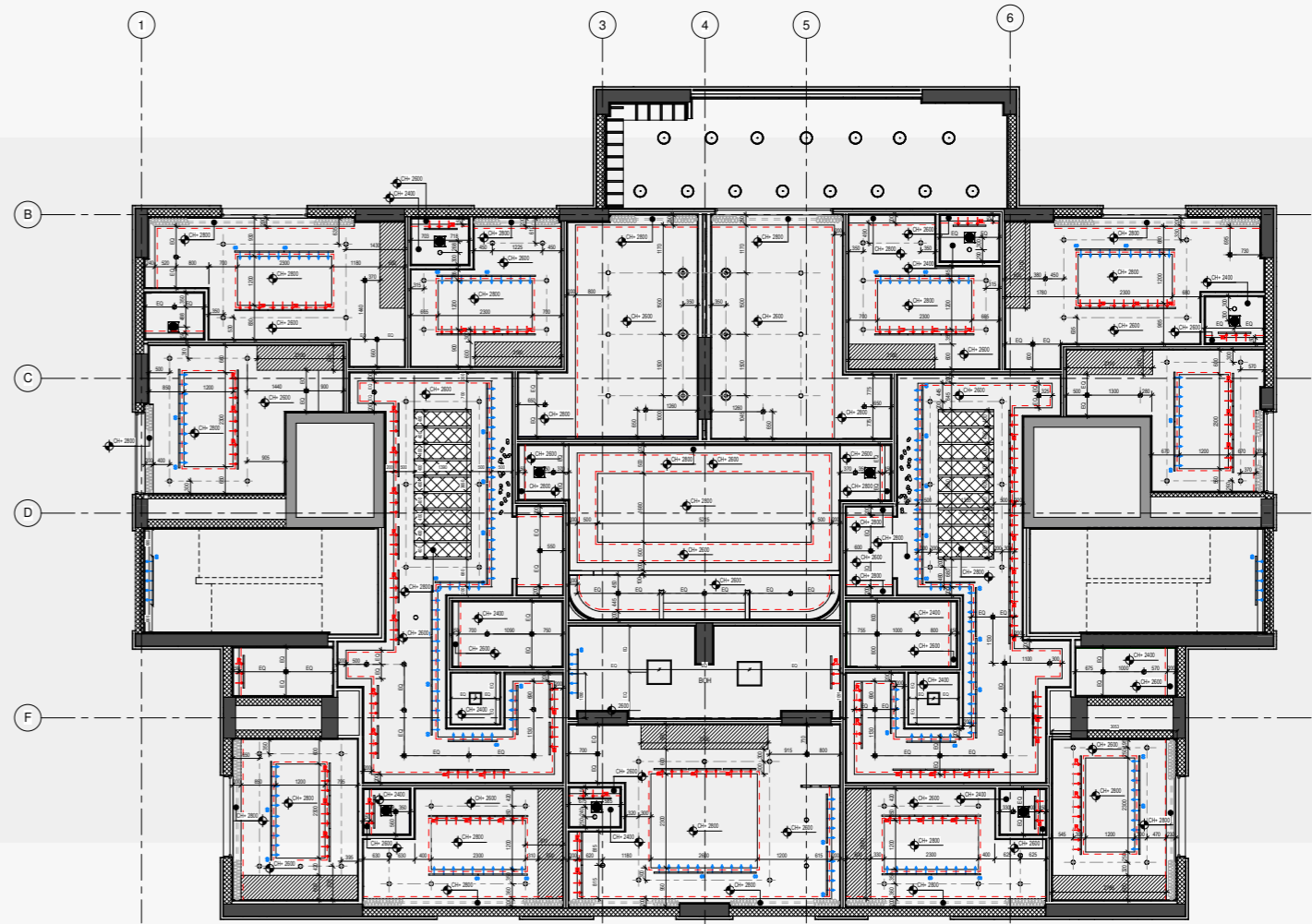
- General layout
- Section(s)/elevation(s)

MEP ASSISTANCE

- Reflecting ceiling plan
- Ceiling heights
- Water supply layout (Only cold/hot water location, pipe size)
- Drainage layout (Only location, size)
- Ventilation layout (Only location of supply and return, room temperature range, airflow, rate and speed)
- Power (Only location of power supply)
- Sound (Only location speakers and source of sound system, location sound control plate)
- Lighting (Only position and type of light, defining control zones)
- Telephone and data (Only location)



1 FIRST FLOOR LEVEL - OVERVIEW PLAN
1:50



1 FIRST FLOOR LEVEL - REFLECTED CEILING PLAN
1:50

DETAILED DESIGN

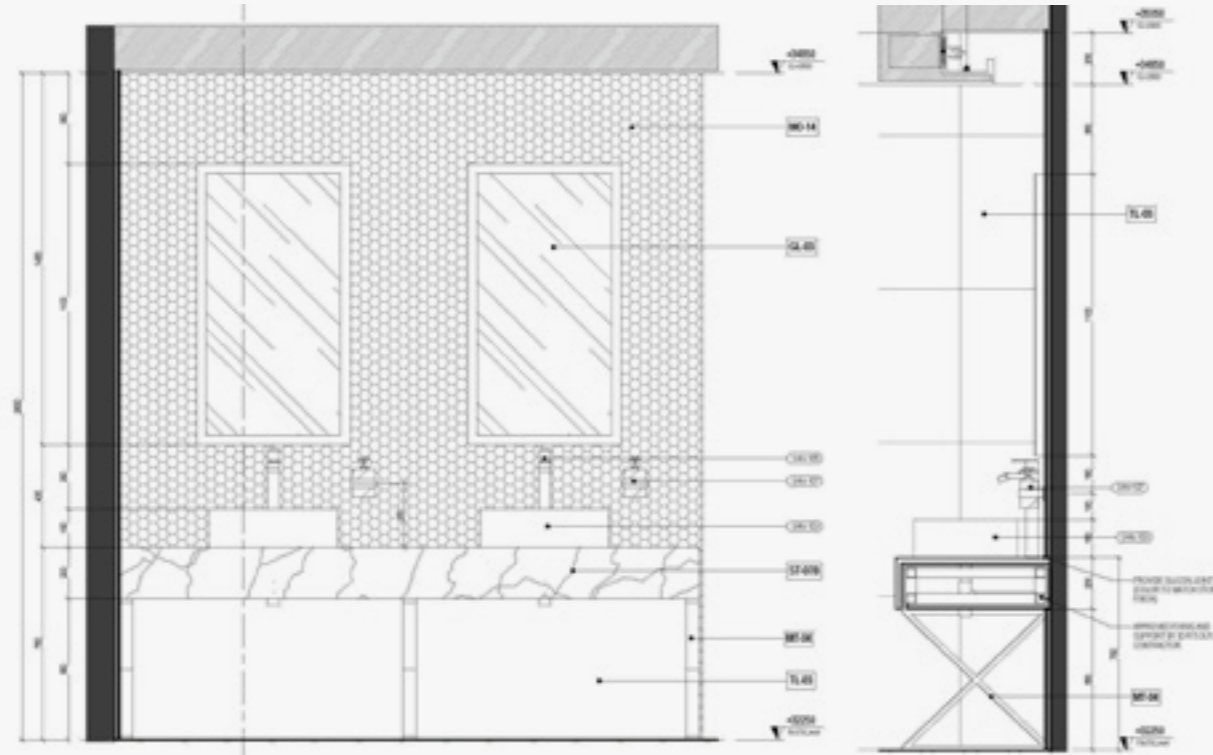
MATERIAL SAMPLE BOARDS

SPECIFICATIONS & SCHEDULES

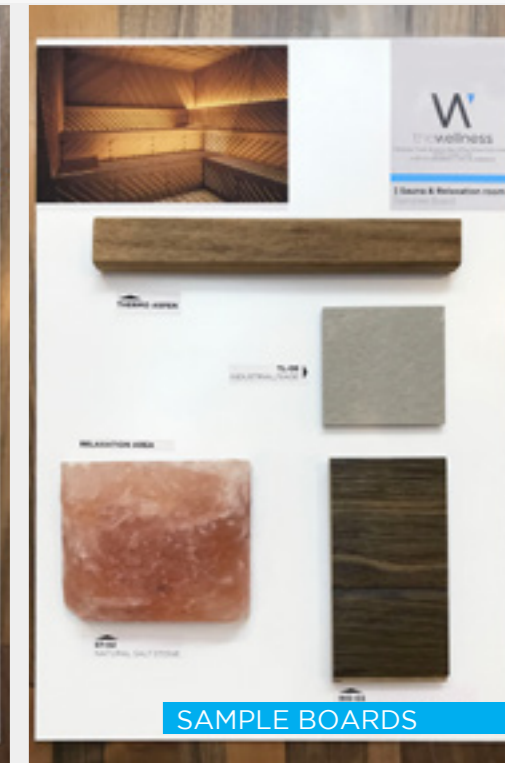
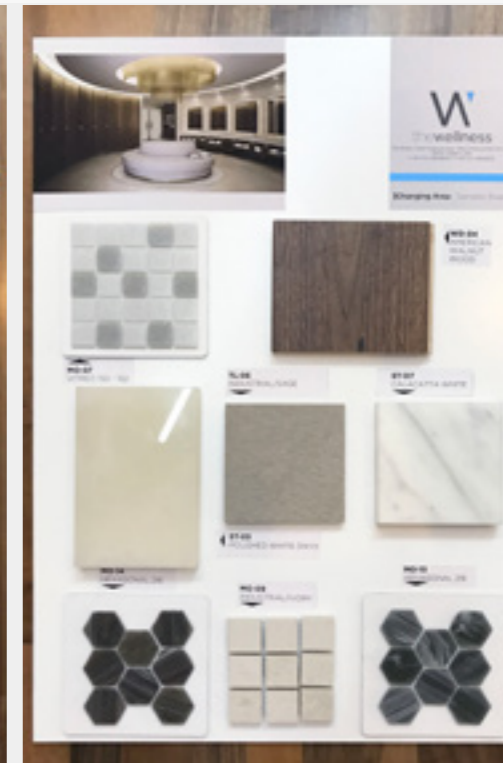
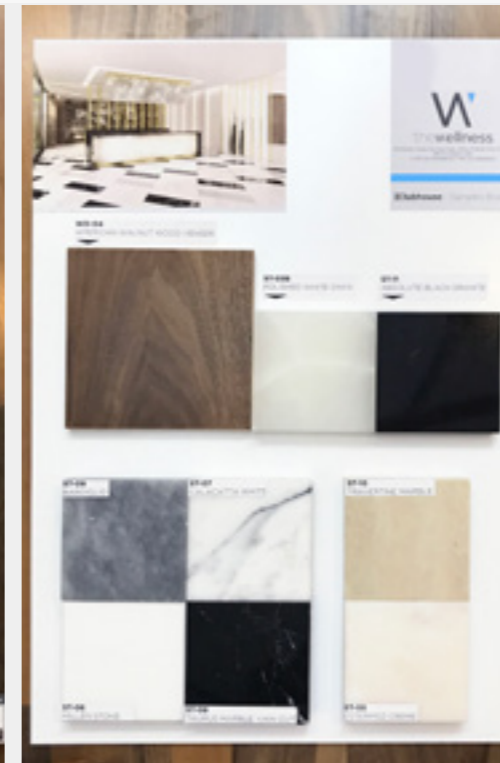
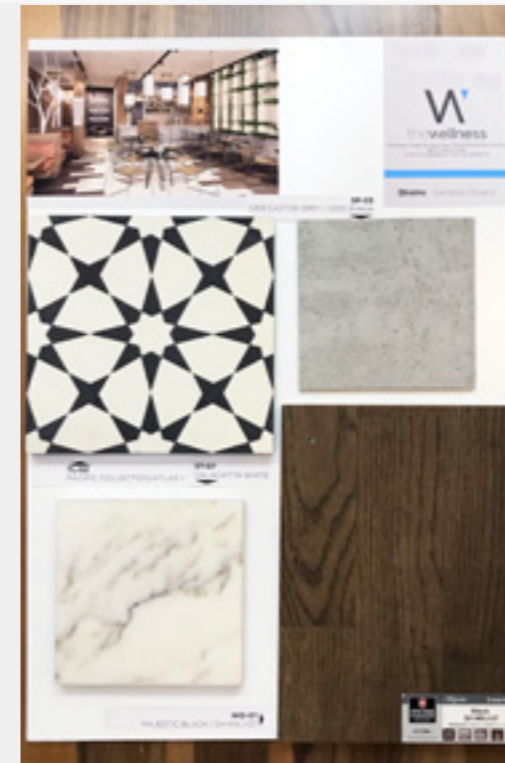
- Architectural & Interior Design
- Spa Equipment Planning

INTERIOR & ARCHITECTURAL DESIGN

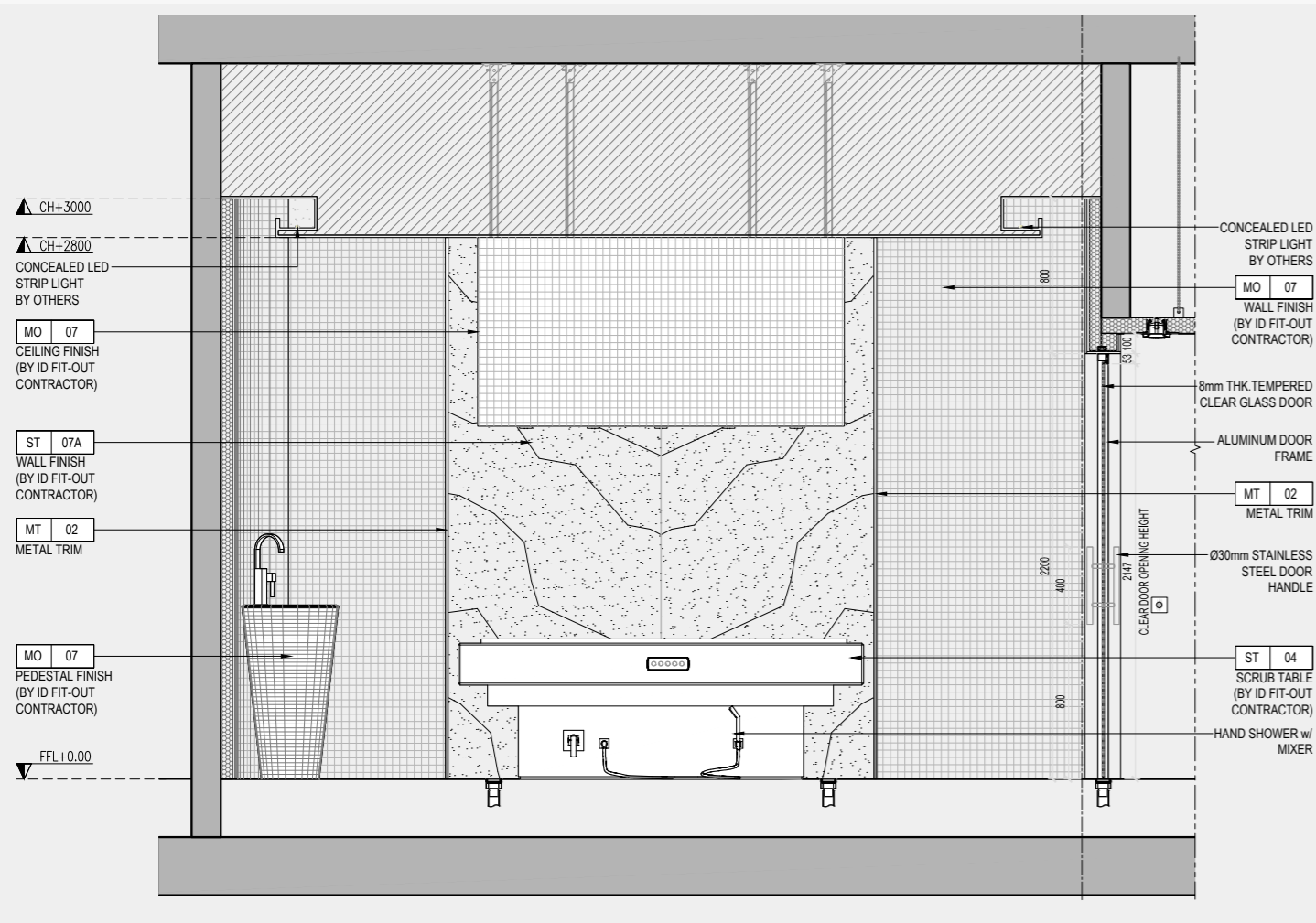
- General layout
- Screed layout
- Floors & walls finishes layout(s)
- Furnishing positioning layout (fixed and loose furniture)
- Joinery works incl. ironmongery and glazier works
- Section(s)/elevation(s) and details
- Doors and windows



DETAILS



SAMPLE BOARDS



EQUIPMENT Planning

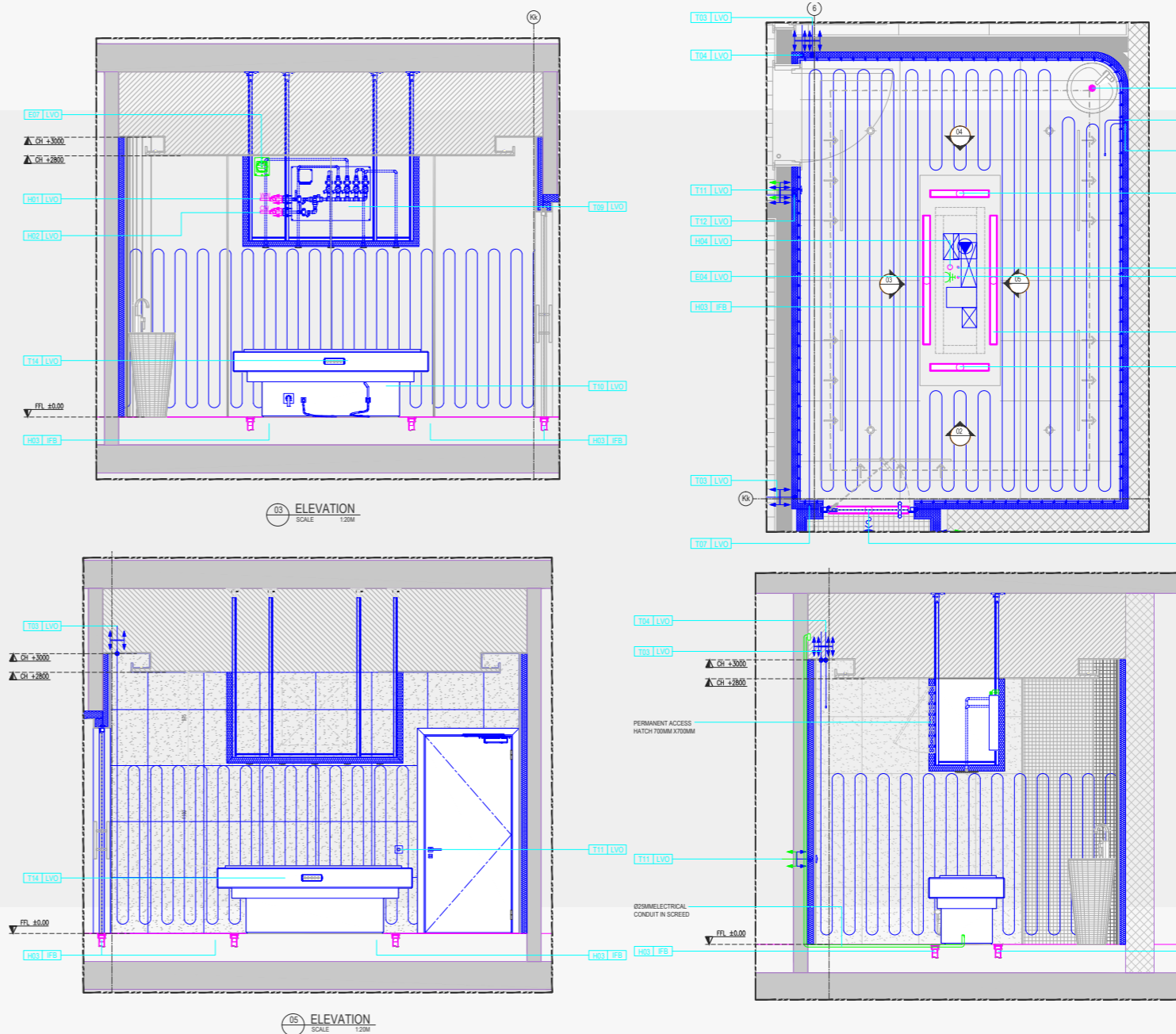
SCHEMATIC ARCHITECTURAL & TECHNICAL EQUIPMENT PLANNING

- Overview plan
- MEP interfaces (For sanitary, heating, ventilation and electric will be clearly marked in the plans in order to provide the basis for all connection work related to the MEP)

- Consumption list (relevant energy supply & consumption data for the technical specialist spa units in view of sanitary, heating, ventilation and electrical requirements)

DETAILED ARCHITECTURAL & TECHNICAL EQUIPMENT PLANNING

- Architectural & Technical Detail Planning: Architectural Detail Drawings (Plans, Elevations, Floor Details); Technical Detail Drawings (Plans, Sections); Plant room/ technical room details; MEP Drawings of SPA Equipment; Documentation (Energy consumption list, technical data sheets)



thermal build		
pos.Nr.	description	construction by
T01	Bench heating cable	thermal build
T02	sensor bench heating	thermal build
T03	wall heating circuit	thermal build
T04	sensor wall heating	thermal build
T05	Table heating circuit	thermal build
T06	sensor table heating	thermal build
T07	floor heating cable	thermal build
T08	sensor floor heating	thermal build
T09	vichy shower water distributor	thermal build
T10	Hand Shower	thermal build
T11	alarm push button	thermal build
T12	basin	thermal build
T13	thermostatic mixer	thermal build
T14	push button selector	thermal build

air conditioning (by others)		
pos.Nr.	description	construction by
L01	connection and piping of fresh air duct (PVC)	HVAC filter
L02	Supply, fit and make all connections for the extract duct (all PVC). Extracted essence air to run direct to outside.	HVAC filter
L03	Supply, fit and make all connections for the extract ducts with adjustable plate valve for the cabin entry.	HVAC filter

heating/sanitary (BY MAIN CONTRACTOR)		
pos.Nr.	description	construction by
H01	Supply insulated hot water pipe, stop cock and interconnector, including connection at handover point, circulator pipes or heating hand.	filter
H02	Supply insulated cold water pipe, stop cock and interconnector, including connection at handover point.	filter
H03	Supply and fit linear floor drain complete with trap and all pipework in the cabin.	filter
H04	Supply, fit and make all connections of stand pipe.	filter

electrical specification (BY MAIN CONTRACTOR)		
pos.Nr.	Comments	construction by
E01	Break interruptor for electrical heating	electrician
E02	Supply, fit and make all connections to transformer incl. Connections to cleaning lights. Controlled by switch at plant room.	electrician
E03	Connection of emergency push button and cables to alarm panel e.g. reception and. mute switch at the cabin	electrician
E04	provide floor socket connections for a	electrician
E05	Supply, fit and make all connections to dimmer transformer incl. Connections to led strip lights. Controlled by one lighting (BMS).	electrician
E06	Supply, fit and make all connections to dimmer transformer incl. Connections to spotlights. Controlled by one lighting or BMS.	electrician
E07	Break interruptor for vichy shower control	electrician

ATTENTION:
RCD (Residual current device)
nominal current IΔn: 0.03 A to be fitted for all electrical supplies.

ATTENTION:
Water Temperature Range:
01. Cold Water: 10-18 deg C
02. Hot Water: 60-65 deg C

Legends:

- heating/sanitary
- air conditioning
- electrical
- scope of thermal build delivery
- done by main contractor
- point of delivery
- done by main contractor
- thermal build

heating/sanitary specifications
electrical specifications
air conditioning specifications
delivered by thermal build
at ceiling height
at cabin roof height
inside the flooring construction
place at the construction site
place acc. to the deliverer
1200 mm above finished flooring

POOL & WATER

Features

Design

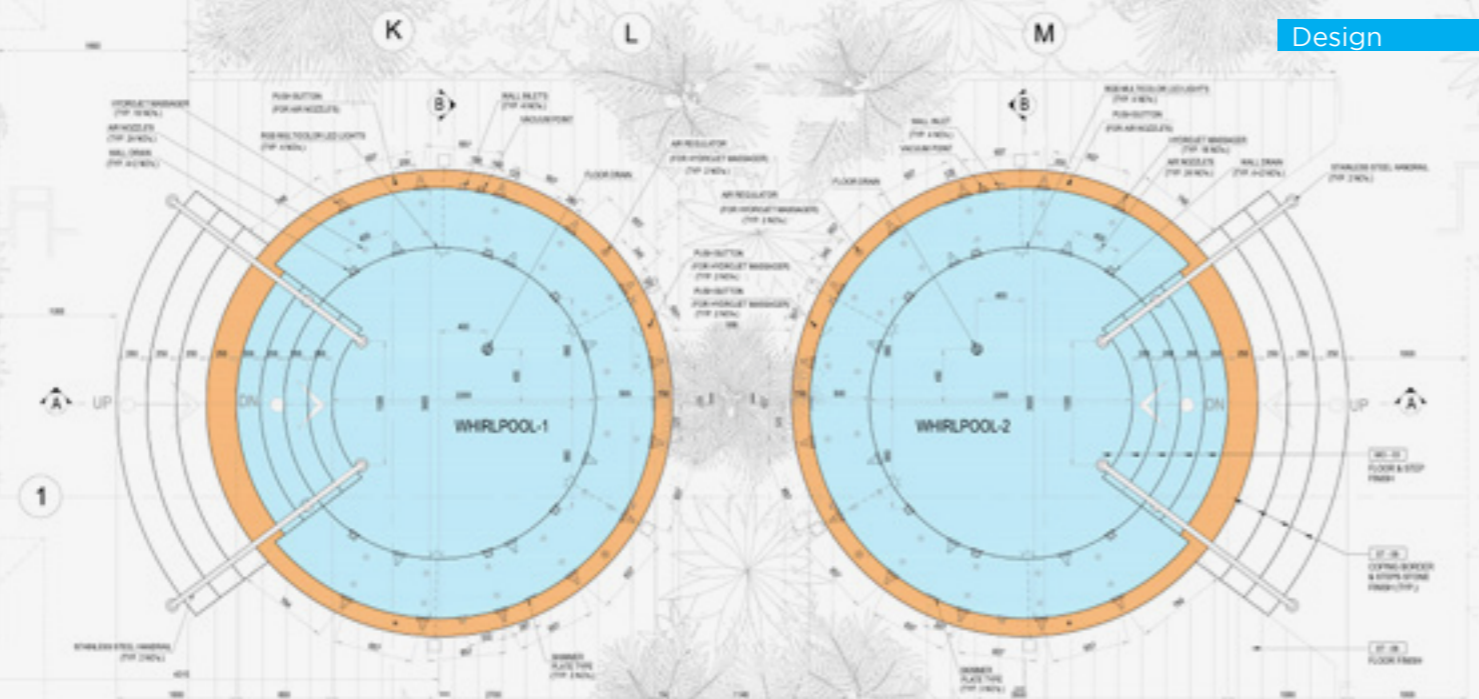
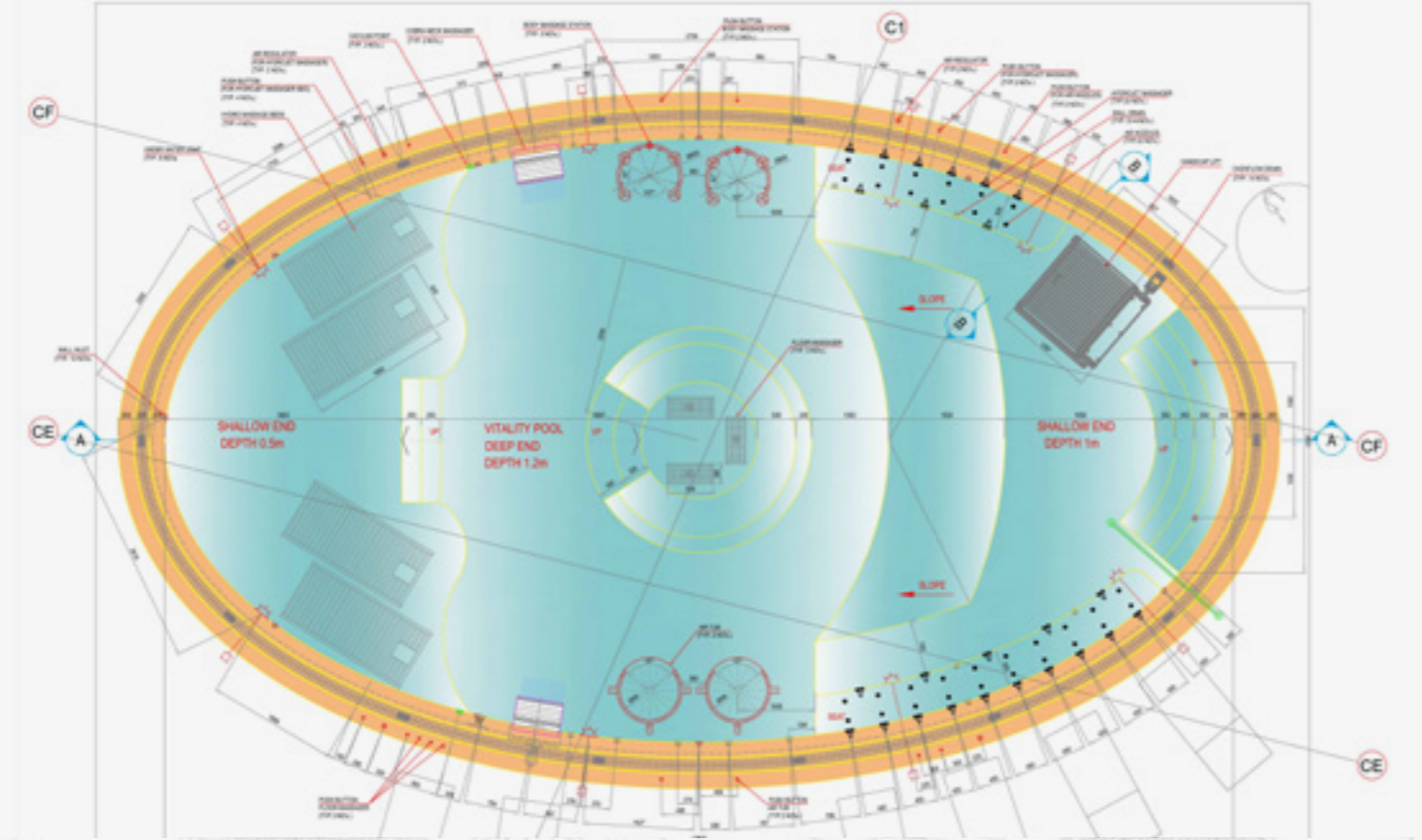
- Architectural detail drawings
- Pool Plan and sections
- Technical detail drawings
- Plant room/Technical room Details
- MEP drawings
- Documentation
- Technical data sheets
- Sections and pipe drawings
- Filtration and water treatment
- Green products

Pool Structure

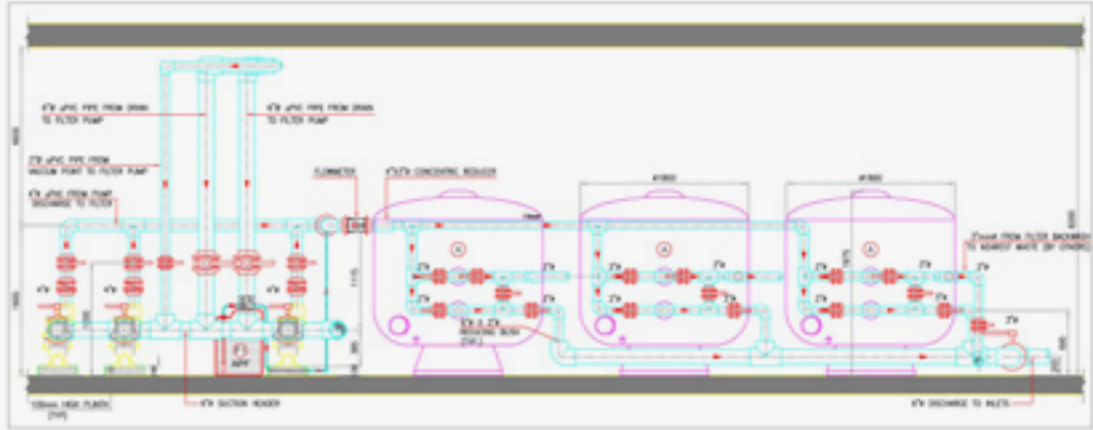
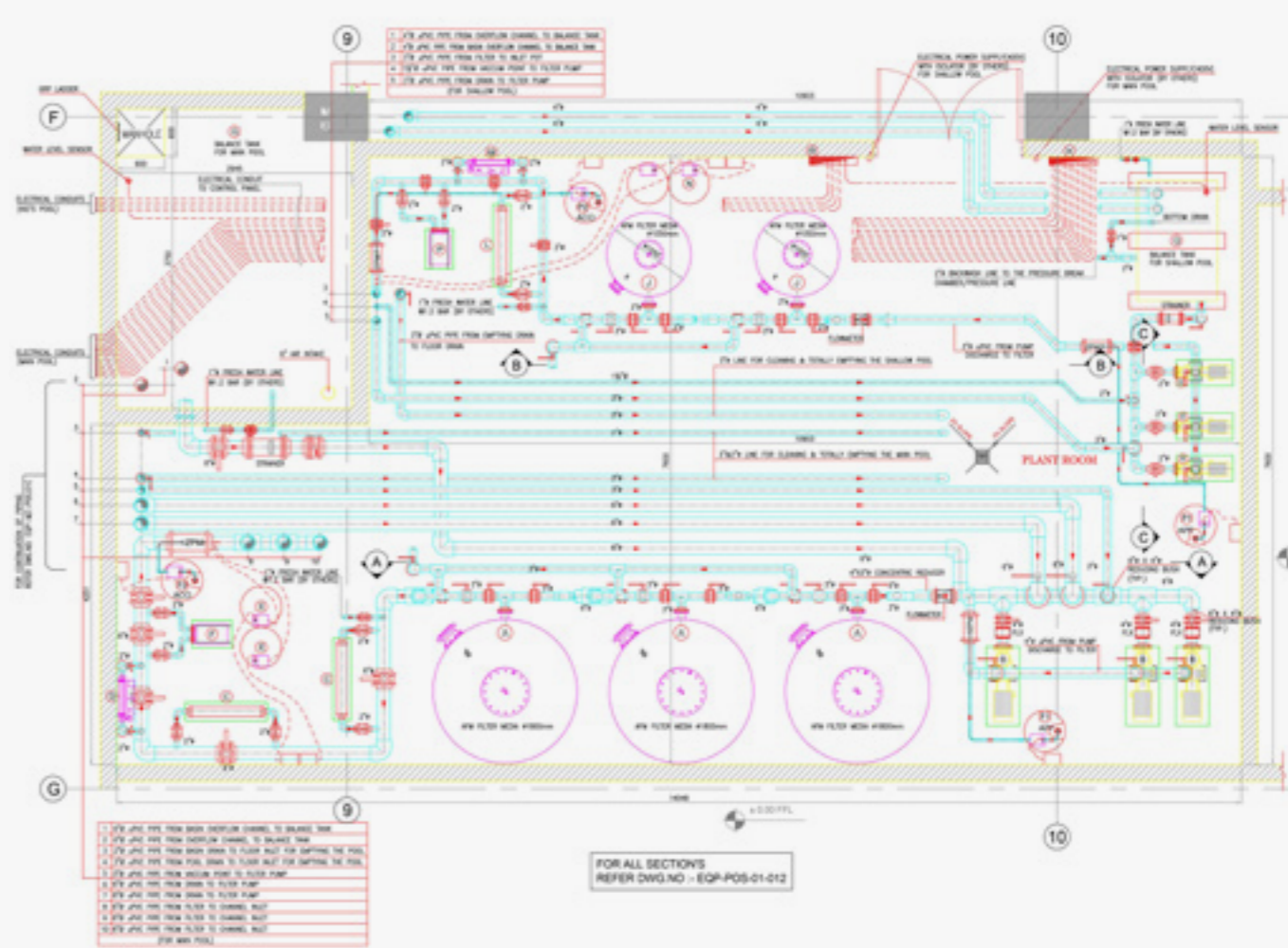
- Concrete Pools
- Preformed Pools
- Stainless steel Pools

Therapy pools and water features exclusive functions

- Hydro Pools
- Whirl Pools
- Vitality Pools
- Salt Water Pools
- Floatation Pools
- Kneipp Walks
- Water Features



Design

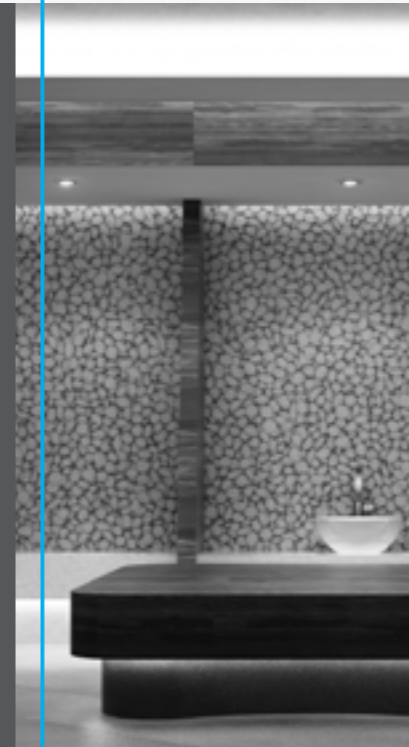


Filtration and water treatment

WET AREA

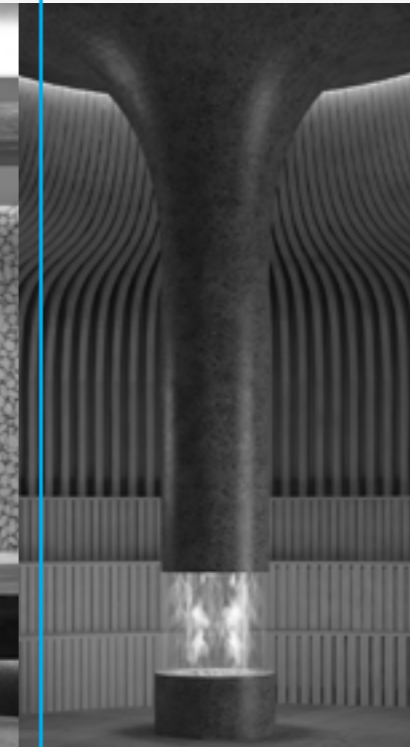
- 1.0 CLEANSING
- 2.0 HEAT & ICE EXPERIENCES
- 3.0 WATER FEATURES
- 4.0 INHALATION
- 5.0 MEDITATION & RELAXATION

1.0



CLEANSING

2.0



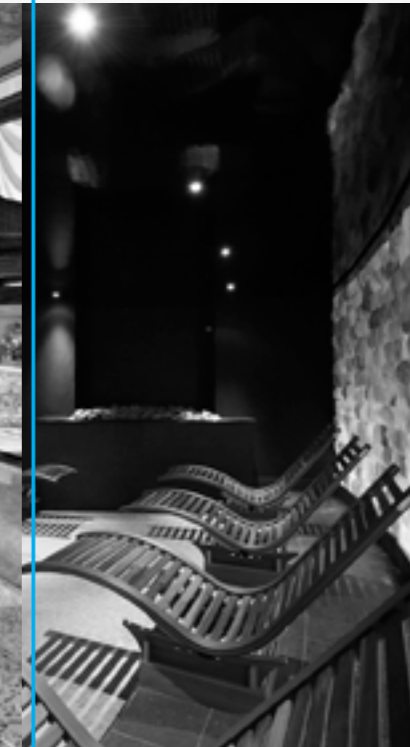
HEAT & ICE

3.0



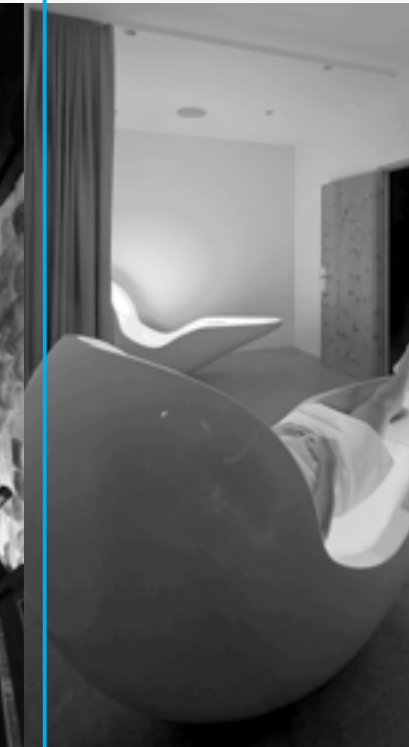
WATER FEATURES

4.0



INHALATION ROOMS

5.0



RELAXATION

CLEANSING



Private Villa - DUBAI, UAE



The Clubhouse - ABU DHABI, UAE



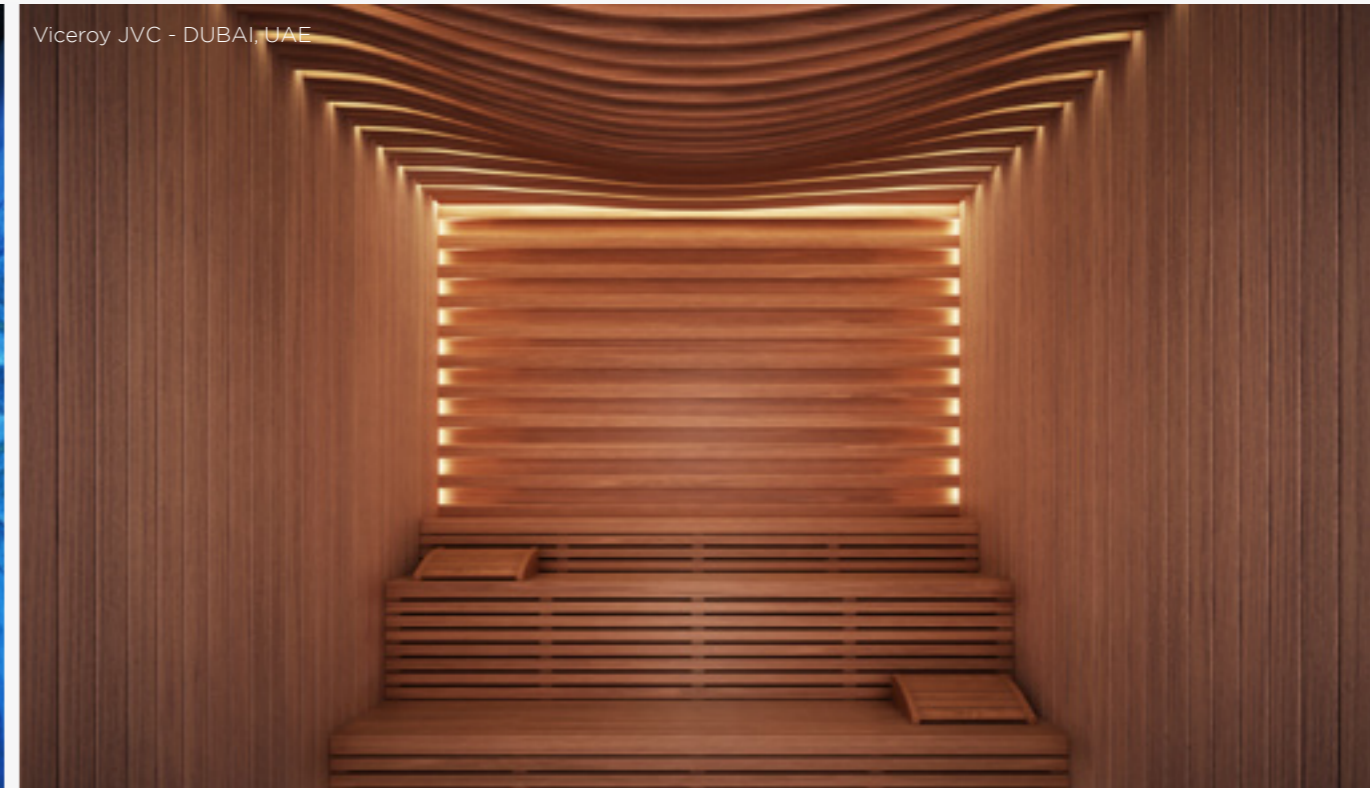
Acquaparco Splash e Spa Tamaro - SWITZERLAND



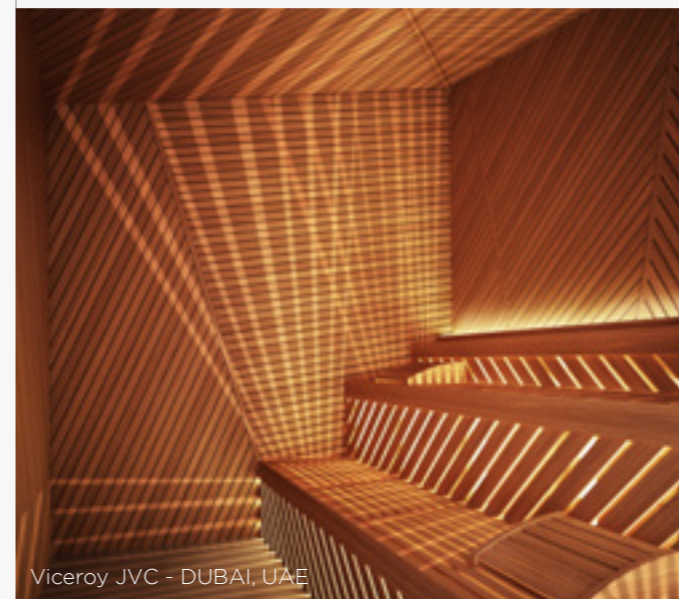
HEAT & ICE EXPERIENCES



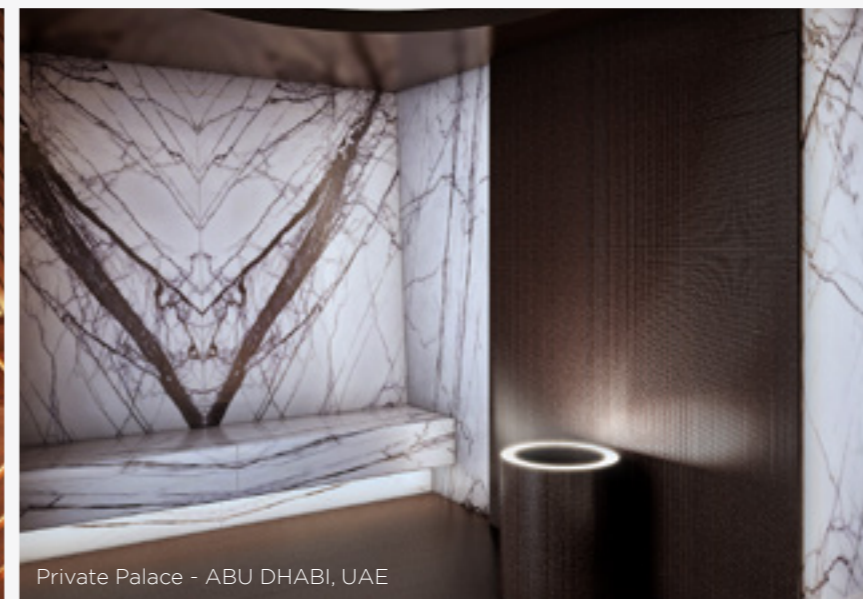
St Regis - CAIRO, EGYPT



Viceroy JVC - DUBAI, UAE



Viceroy JVC - DUBAI, UAE



Private Palace - ABU DHABI, UAE



The Address JBR - DUBAI, UAE



**WATER
FEATURES**



Acquaparco Splash e Spa Tamaro - SWITZERLAND



Sackmann Hotel - GERMANY



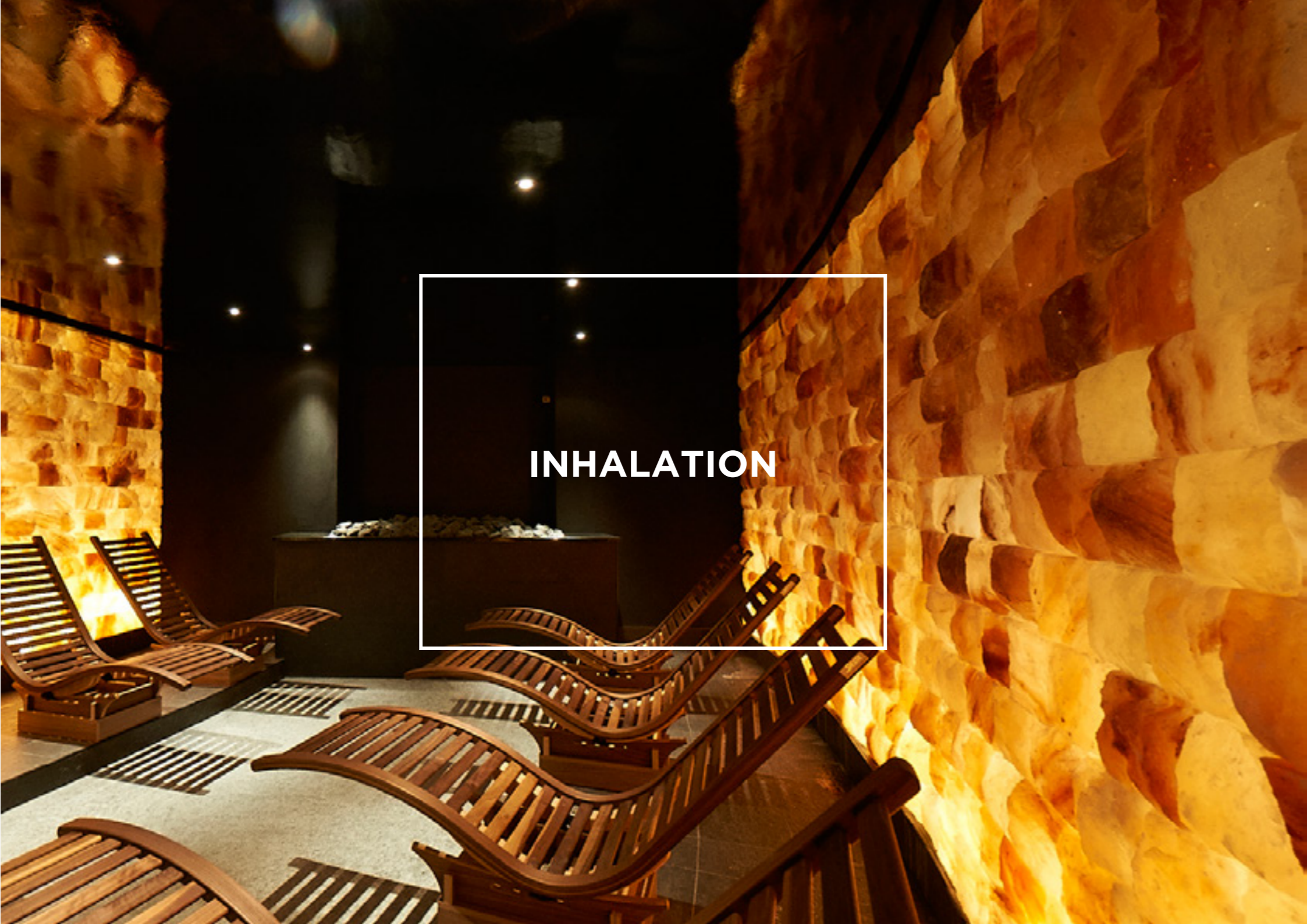
The Address JBR - DUBAI, UAE



W Hotel - MUSCAT, OMAN



The Clubhouse - ABU DHABI, UAE



INHALATION



Aqua Dome - TYROL, AUSTRIA



Hotel Bayerwaldhof - GERMANY



Al Mesillah - QATAR



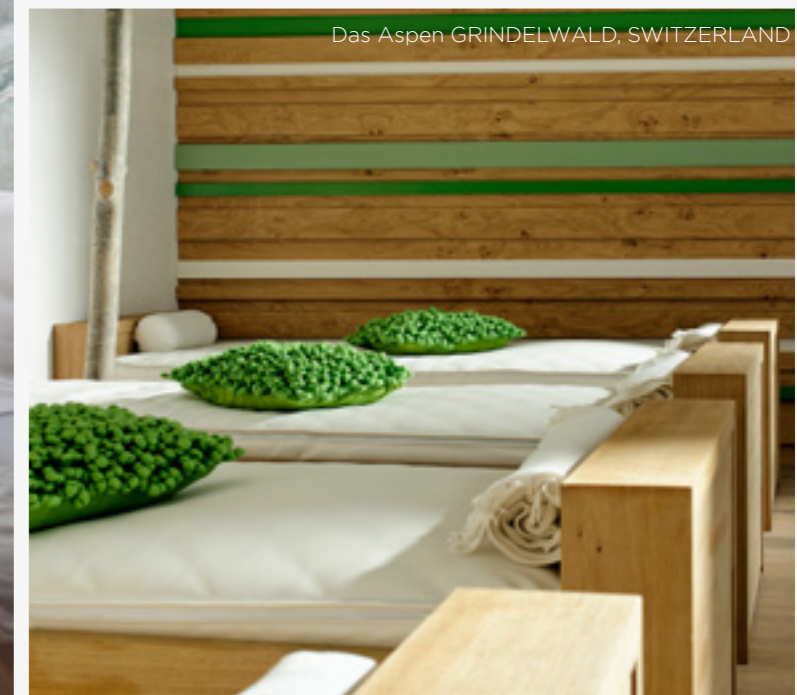
**MEDITATION
& RELAXATION**



Aqua Dome - TYROL, AUSTRIA



Kempinski - RIYADH, KSA



Das Aspen GRINDELWALD, SWITZERLAND

www.thewellness.ae