

Nuvola. Aesthetic ecstasy.



nuvola

FLOATING BEAUTY FORMULA



The importance of emotions.

Nuvola Experience
opens up a whole new dimension in aesthetics:
beauty and wellness, aesthetic treatments and sensual pleasure
together at last, in one sublime, holistic experience.

nuvola

FLOATING BEAUTY FORMULA



The ultimate beauty formula.

Nuvola Experience is the formula of perfection:
a three-part system that, together with the Book of Rituals,
revolutionises traditional aesthetic treatment and transforms beauty centres,
beauty areas of hotels, wellness and fitness centres
into one single futuristic beauty spa.

nuvola

Bed/tub for treatments
while you float at zero gravity,
with coloured lights, adjustable
temperature, hydro massage,
and no direct contact
with water.

+

soffio

Sophisticated massage
bed with water mattress and
a gentle wave effect that
ripples up the body.
Temperature, light colour,
bed height and wave intensity
electronically adjustable.

+

battista

Multi-purpose wheeled
trolley with hot and cold
compartments,
Kneipp style.

By using these three component elements in synergy
with each other you can enhance the results
of beauty treatments and massages,
combining all the physical and psychological benefits of floating,
hot tub and contrasting heat, with no direct contact with water.



The treatment is always special.

Nuvola Experience is an unforgettable journey of the senses.
The touch of hands, the contrasting heat, the floating suspended
between enveloping colours and scents: every aesthetic treatment
becomes a holistic experience of wellbeing for all the senses.

1

The Nuvola Experience begins on the **Nuvola** bed, following the manual techniques described in the Book of Rituals. Pindasweda cloths or sachets are used during this phase, heated or cooled as required in the respective compartments of the **Battista**, the impeccable assistant who is right by the practitioner's side throughout.

2

Cream, oil, mud, clay, etc. All treatments, including scrubs, can be applied easily, following the protocols of any cosmetic line of your choice.

3

The practitioner swathes the guest in a disposable sheet and then between the warm, water-filled wings of the Nuvola. The bed is lowered electronically and the guest begins to float in 400 litres of water at adjustable temperature. And all without getting wet.

4

At the end of the treatment the bed rises, slowly bringing body and mind to a gentle re-emergence from this experience of pure pleasure. Assisted by Battista and the Book of Rituals, the practitioner rounds off the treatment and accompanies the guest to the shower.

THE NUVOLA EFFECT ON THE BODY

Hot water envelops the body uniformly, supporting it in a dry embrace. Freed from its own weight, the body can rest to the full: every muscle and the entire spine are at complete and utter ease.

THE NUVOLA EFFECT ON THE MIND

In the absolute comfort of even, constant heat, massaged by hydrojets, cocooned in the colours they love best, guests will experience a powerful journey of recovery from stress and anxiety. The body is free to produce endorphins; Slowly but surely, it loses the perception of its own borders and enters a new dimension that brings it back to the primordial experience, long-forgotten and lost, of being in the mother's womb.

THE NUVOLA EFFECT ON THE TREATMENT

The synergy of the heat which promotes the opening of the pores of the skin together with the water massage and absence of gravity which improve tissue oxygenation and the microcirculation enhances the effects of the treatment applied; as toxin elimination is stimulated, the treatment can work to its full advantage on the body.



5

The next phase of the experience takes place on the sophisticated massage table: **Soffio**, which like a soft, warm tropical beach, welcomes the guest and supports him in a soft, temperature-adjustable water mattress with a rhythmic waves, illuminated by soft, enveloping, coloured light.

6

Aided by the electronically adjustable height system the practitioner can perform an outstanding massage, enhancing it with alternating touch and pressure using Pindasweda cloths and sachets, cooled or heated by Battista as required.

7

During prone massage the face rests in a special triangular hole, leaving the nose and mouth free to breathe so the guest can enjoy the scent of his/her favourite essential oils, housed in the integrated holder.

8

The experience ends with the winding-down techniques and salutations as described in the Book of Rituals, giving the guest time to bask in the sensation of utter well-being and profound lightness to the fullest.

THE SOFFIO EFFECT

The blend of warmth, coloured lights, scents and delicate rhythmic waves enhance the healing touch of the practitioner's hands, providing a sense of absolute relaxation and guaranteeing maximum efficacy of the massage.

THE BATTISTA EFFECT

With the able assistance of Battista practitioner can easily enhance the effects and pleasure of the massage, and maximise on the benefits of contrasting heat.





THE ADVANTAGES OF NUVOLA EXPERIENCE



The experience that's worth it.

Nuvola Experience revolutionises your beauty centre and guarantees a long list of benefits for your guests and your business.



For your guests

The aesthetic treatment, from product application through to massage, becomes a truly emotional experience.

The treatment application and massage phases find a precious synergy that enhances both, and makes them absolutely unforgettable: from beginning to end, the guest has a sense of actually living a true wellness experience.

The efficacy of both the treatment application and the massage is enhanced exponentially: with the synergy between Nuvola, Soffio and Battista, aesthetic results are optimised and more visible.

Nuvola Experience guarantees significant results, not only on an aesthetic but also physical and psychological level, including recovery from stress, improvement of sleep and general well-being.

Nuvola Experience is dry: the guest's body and hair do not get wet, which means savings in time and greater convenience.

For your business

The beauty centre is transformed into a beauty spa: water, although it does not wet the body, is nevertheless the key element of Nuvola Experience. In this way, the aesthetic centre approaches the wellness world and the world of wellness can, in turn, offer a superior beauty experience in perfect harmony with saunas and steam baths.

If feasible for your business, it is possible for a single practitioner to work with a pair of guests at the same time: while one guest relaxes in the Nuvola bath, the other receives a massage on the Soffio and vice versa. Nobody is ever left alone and without care.

You can retain loyalty by offering a variety of customised programs on a weekly basis or treatments tailored to your guests' needs.

Nuvola Experience is accompanied by a Book of Rituals to help you to use the three component elements to their best advantage. Every treatment or massage is enhanced by rituals which interweave manual techniques and the heat contrast provided by Battista, for an unforgettable Nuvola Experience for the guest that is simple for personnel to perform.

The Book of Rituals provides effective and fast training procedures, that are simple to learn even for less experienced staff, and to teach in case of frequent turnover in your business.

Nuvola Experience is suitable for practically all and any line of cosmetics you care to choose: during the protocols outlined by the various producers, cosmetics will be enhanced and rounded off to perfection with the Nuvola Experience procedures described in the Book of Rituals.

Nuvola Experience is accompanied by a communication kit which will prove useful in enhancing your business a: "Nuvola Experience" sign to apply outside, roll-up banners, posters, showcase signs, counter display with promotional flyers, calendar diary, appointment cards, etc. You can choose and order the most appropriate items to suit your needs.

All the elements that make up Nuvola Experience can be easily and quickly installed, replacing your old treatment and massage tables. They do not need further work of any kind, water supply pipes or drains.

Maintenance is minimal and consumption reduced.



MAKEUP & BEAUTY



Float and shine.

There are numerous benefits of floating,
or rather, of dry floatation in zero gravity in the Nuvola bed/tub.
These benefits bring excellent results in the most diverse areas of life,
from renewed energy on a day-to-day level, to improved aptitude at work
and enhanced performance in sports.



Increase
in concentration



Improvement
in tissue
oxygenation and
microcirculation



Improvement in the
physiological parameters
of relaxation, including
cardiac variability,
blood pressure and
breathing rate



Improvement
in learning,
cognitive abilities
and creativity



Improvement in
powers of introspection



Increase
in production
of serotonin,
an antidepressant
and natural
anxiolytic,
resulting in
stress reduction



Improvement
in quality of sleep
and reduced insomnia



Improved
jet-lag recovery



Reduction of pain
and musculoskeletal
tension through
distension and
relaxation of the
spinal column



Improvement in
athletic performance





Dedicated to you.

Nuvola Experience is the ideal solution for so many businesses
in need of renovating or expanding their offer.

Further possibilities include opening up a new beauty centre or replacing
your existing beauty centre with an exclusive Nuvola Beauty Centre in order
to offer the market a new proposal with a unique identity.

LARGE BEAUTY CENTRES

Can develop Nuvola Experience (shop in shop) to expand, enhance and refresh their offer.

SMALL BEAUTY CENTRES

Can revolutionise their layout from a traditional beauty centre to an exclusive Nuvola Beauty Centre.

SMALL ACCOMMODATION FACILITIES

Small hotels can replace their beauty area with a futuristic Nuvola Experience, in a turnkey solution which is also well-suited to situations of frequent turnover.

MEDIUM AND LARGE ACCOMMODATION FACILITIES

Hotels, resorts, relais, etc. can enhance their offer with the precious added value of Nuvola Experience or an exclusive Nuvola Beauty Centre. This is an investment that you can exploit to the full, not only in beauty treatments but also, to name just a few, to offer the countless advantages of floatation to business clientele (jet-lag recovery, improvement of physical and mental performance, stress reduction, etc.).

MEDIUM AND LARGE FITNESS CENTRES

Can add to their existing offer with Nuvola Experience in a solution which is easy both to set up and to manage.

COSMETIC COMPANIES

Can choose Nuvola Experience to transform cosmetic treatment into holistic spa experiences.

BEAUTY/WELLNESS/FITNESS CENTRES ALREADY IN POSSESSION OF NUVOLA

Nuvola Experience is a precious opportunity to add new value to your investment through:

- Simple and quick aesthetic overhaul of the bed/tub;
- The opportunity to extend the scope of existing offers through the addition of Soffio and Battista.





nuvola

The sustainable lightness of being.

Floatation bed/tub for every imaginable type of body wrap: mud, algae, silt, clays, bandages, creams, oils.

Scrubs and mini-massages with oils and creams can also be performed during the opening and closing phases of floatation.

Nuvola is a technologically advanced product which was created as an evolution of traditional body treatments: from pure aesthetics to a holistic experience. It offers a unique emotional ambience generated by the intelligent synergy of water, heat and light.

The body floats in 400 litres of temperature-adjustable water, swathed in a waterproof sheet.

Although there is no direct contact with the water, the sensation of warmth and immersion is absolute.

You can choose from sequences of fading colours or your own favourite one.



BENEFITS

Floating in zero gravity enhances the effects of the treatment and facilitates the elimination of toxins through the synergistic effect of:

Water, evenly distributed around the body by a patented system

Water temperature, which promotes the opening of the skin's pores

Increase in perspiration, which facilitates the elimination of impurities

Complete physical and mental relaxation with improved microcirculation

A variety of hydromassage form, depending on the version of the Nuvola, to further relax the parts of the body which are being touched and to intensify the effects of the treatment.

VERSIONS

nuvola PURA

Floating in its most elemental form, with all the power that its benefits provide.

- PVC waterproof cover for water circulation (plus 1 spare)
- Water recirculation system, above the body
- Manual or pre-set programming

nuvola LEGGERA

The light equipment that makes a weighty difference: Enhances the benefits of floatation with coloured lighting and a lumbar massage that intensifies relaxation of the muscle fibres of the back.

- Transparent PVC waterproof sheet for water circulation (plus 1 spare)
- Water recirculation system, above the body
- Lumbar massage system
- LED lighting system with underwater coloured lighting
- Manual or pre-set programming

nuvola VIVA

Floatation is even more energetic and effective through the coloured lighting, lumbar and plantar massage with six hydrojets for an intense reactivation at the body's base.

- Transparent PVC waterproof sheet for water circulation (plus 1 spare)
- Water recirculation system, above the body
- Lumbar massage system
- LED lighting system with underwater coloured lighting
- Plantar massage system
- Manual or pre-set programming

nuvola ALTA

Full optional: This is the Nuvola that flies you to greater heights: coloured lighting, lumbar, plantar, thigh and buttock massage and four different programs, each one featuring different colours, massages and times of different treatment times.

- Transparent PVC waterproof sheet for water circulation (plus 1 spare)
- Water recirculation system, above the body
- Lumbar massage system
- Plantar massage system
- Thigh / buttock massage system
- LED lighting system with underwater coloured lighting
- Manual or pre-set programming

TECHNICAL FEATURES

Installation

Rapid installation in any space, without the need for any special equipment, drains or additional works

Power supply

Maximum consumption 2500 W

Power supply

Single-phase supply - 220V - 50 / 60Hz

Maximum absorption

16A

Dry floatation system

Filling system

patented upper bag

Transparent or grey waterproof anti-mould, antibacterial PVC cover for water circulation (one supplied as part of the package plus one spare)

Dimensions

Length 220 cm

Width 94 cm

Height 71 cm

Weight

270 kg empty

About 670 kg when in use

Cladding

Veined oak

EC-approved



COLOUR OPTIONS



NATURAL
OAK



WENGE
OAK



FOREST
BLUE



MOSS
GREEN



WHITE
OAK



LIGHT
EARTH



VIOLET
ROSE

soffio

A Midsummer Night's Dream.

Soffio is the high-tech, advanced bed for all forms of massage and body treatment that guarantees the maximum of ease to the practitioner and sensual pleasure to the guest. The heat of the mattress warms the practitioner's hands during treatment, which in turn means further warmth for the guest.

Like a warm tropical shore, the underlay is soft and inviting with a temperature-adjustable, water-filled mattress and a gentle wave effect that ripples up the guest's body, from the feet to the neck and slowly back down again.

Water-filled mattress with adjustable temperature, colour and wave intensity, all controlled via a digital interface.

The height of the bed can be adjusted electronically.

Contour-mould face hole for breathing in prone position with innovative support holder for essential oils and aromas.



BENEFITS

Maximum ease for the practitioner is guaranteed by the optimal mattress grip on the guest's body and the adjustable surface height.

This system means that blankets are no longer required in winter, while in summer it can refresh the body when water is used at room temperature.

The rhythmic, slow and delicate lapping of the waves has an incredibly relaxing effect and inspires the sensation of being "elsewhere," caressed by the gentle waves of a warm tropical sea.

The contour-mould face hole, which allows the guest to breathe while maintaining the correct alignment of the spinal column even in prone position, features an innovative support system for essential oils and aromas.

TECHNICAL FEATURES

Installation

Rapid installation in any space, without the need for any special equipment, drains or additional works

Power supply

Maximum consumption 1400 W

Power supply

Single-phase supply - 220V - 50 / 60Hz

Maximum absorption

16A

Padded surface with dry water system

Adjustable water lighting

Contour-mould face hole

Integrated support for essential oils

"Marea" water movement program

"Onda" water movement program

Transparent PVC cover
(one supplied as part of the package plus one spare)

Legs and base in stainless steel

Dimensions

Length 220 cm

Width 82 cm

Height from 70 to 86 cm
(electronically adjustable)

Weight

165 kg empty

Approx. 265 kg ready for use

Cladding

Veined oak

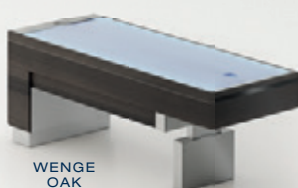
EC-approved



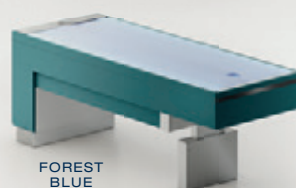
COLOUR OPTIONS



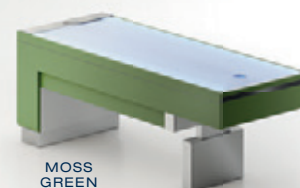
NATURAL
OAK



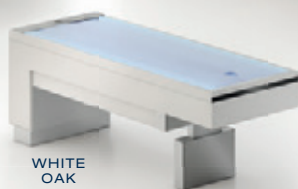
WENGE
OAK



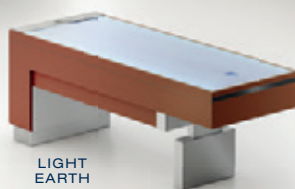
FOREST
BLUE



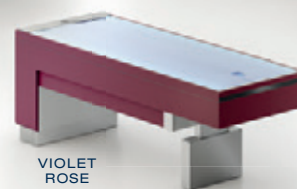
MOSS
GREEN



WHITE
OAK



LIGHT
EARTH



VIOLET
ROSE

battista

Everybody's useful; "he" is indispensable.

Multi-purpose wheeled trolley to ensure that you have everything you need at hand's reach at all times, with Kneipp style heating and cooling compartments.

The ultimate in personal assistants, he is at the practitioner's side throughout the entire treatment: This allows you to customise and enhance the procedures of traditional cosmetic treatments and make every appointment even more pleasant and effective.

Cover, towel and Pindasweda sachets heating compartment

Adjustable heated plate for preparation and optimal temperature maintenance of oils, muds, creams, waxes, stones, etc.

Refrigerator compartment, adjustable to -2 ° C, to keep towels and fresh products cool.

Large counter surface and concealed compartment to ensure that you always have everything you need within easy reach.



BENEFITS

Allows you to enhance and customise traditional beauty procedures with the benefits of contrasting heat, to promote:

Improvement in relaxation and oxygenation of muscles

Improvement in blood circulation

Enhanced efficacy of treatment

Maintenance of products at optimal application temperature

TECHNICAL FEATURES

Trolley

In wood

Power supply

Single-phase supply - 220V - 50/60 Hz

Maximum absorption

4A

Power consumption

Maximum 800W

Dimensions

Length 49 cm

Width 68 cm

Height 81 cm

Weight

39 kg (empty)

Cladding

Veined oak

EC-approved



COLOUR OPTIONS



NATURAL
OAK



WENGE
OAK



WHITE
OAK



FOREST
BLUE



MOSS
GREEN



LIGHT
EARTH



VIOLET
ROSE

Nuvola – Float high, on the most solid of clouds.

Choose Nuvola Experience.

When you purchase Nuvola Experience, you give your business a guarantee of:

Uniqueness and distinction that sets you apart from traditional beauty centres

Expansion of your existing offer with significant added value

Communication kit and set-up of your Nuvola Experience space

Book of Rituals describing the manual technique procedures for simple, efficient use of the Nuvola Experience system

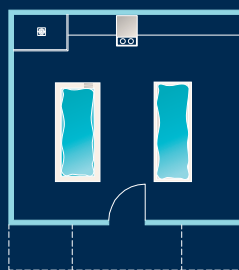
Training package to introduce the system and teach staff how to use the equipment correctly

Inclusion of your name and business details on our international website
www.nuvolaexperience.it

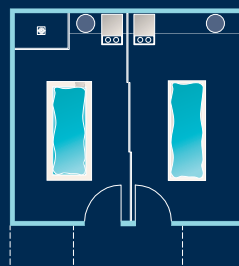
SHOP IN SHOP CABIN SET UP

25 sq.m

Single cabin set up
nuvola + battista + soffio



Cabin set with screen
nuvola + battista / soffio + battista



nuvola

BEAUTY CENTER

Become a Nuvola Beauty Centre.

Open a new business, or transform your existing business into an exclusive Nuvola Beauty Centre and you will receive:

Exclusive differentiation, setting you apart from traditional beauty centres

Communication kit and set-up of your Nuvola Beauty Centre

Book of Rituals describing the manual technique procedures for simple, efficient use of the Nuvola Experience system

Revolution of your offer with significant added value

Support in promoting your business with periodical materials off and online

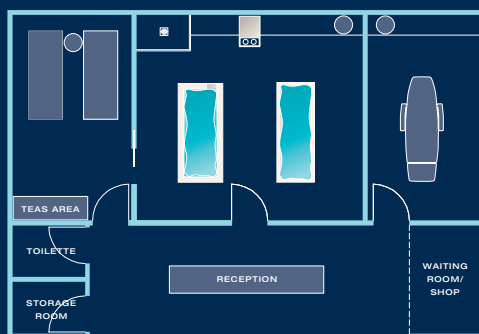
Training package to introduce the system and teach staff how to use the equipment correctly

Assistance in defining the architectural/visual layout of your centre in accordance with Nuvola guidelines

Appropriate promotion of your centre and your offer on our international website www.nuvolaexperience.it

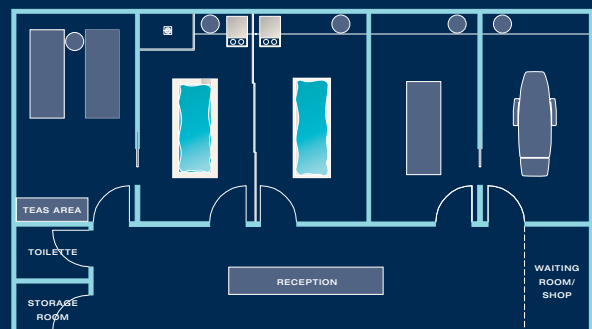
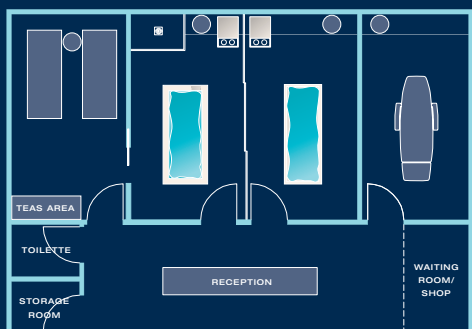
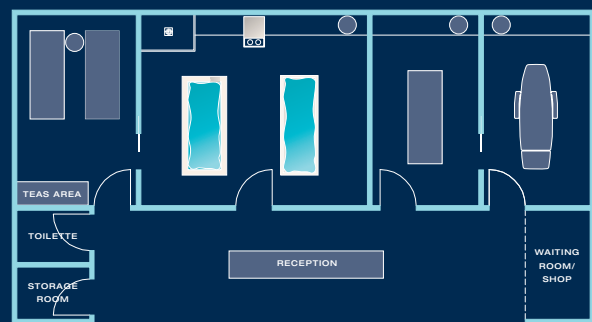
NUVOLA BEAUTY CENTRE SET-UP

75 sq.m



NUVOLA BEAUTY CENTRE SET-UP

90 sq.m



- Benson H, Greenwood MM, Klemchuk H. *The relaxation response: psychophysiology aspects and clinical applications*. Int J Psych Med. 1975; 6(1-2): 87-98.
- Bood SA, Sundequist U, Kjellgren A, Norlander T, Nordstrom L, Nordenstrom K, Nordstrom G. *Eliciting the relaxation response with the help of floatation-REST (Restricted Environmental Stimulation Technique) in patients with stressrelated ailments*. Int J Stress Manag. 2006; 13(2): 154-75.
- Bood SA, Sundequist U, Kjellgren A, Nordstrom L, Norlander T. *Effects of floatation-REST (Restricted Environmental Stimulation Technique) on stress related muscle pain: are 33 floatation sessions more effective than 12 sessions?* Social Behav Person. 2007; 35(2): 143-56.
- Cunha MG, Caromano FA. *Physiological effects of immersion and its relation with sensory deprivation and relaxation in hydrotherapy*. Rev Terap Ocupac Univ São Paulo. 2006; 17(3): 137-41.
- Dierendonck DV, Nijenhuis JT. *Floatation Restricted Environmental Stimulation Therapy (REST) as a stress-management tool: A meta-analysis*. Psychol Health. 2005; 20(3): 405-412.
- Edebol H, Bood SA, Norlander T. *Chronic Whiplash-Associated Disorders and Their Treatment Using Floatation-REST (Restricted Environmental Stimulation Technique)*. Qual Health Res. 2008; 18(4): 480-8.
- Ekedahl H, Jönsson B, Frobell RB. *Fingertip-to-floor test and straight leg raising test: validity, responsiveness, and predictive value in patients with acute/subacute low back pain*. Arch Phys Med Rehabil. 2012; 93(12): 2210-5.
- Esch T, Fricchione GL, Stefano GB. *The therapeutic use of the relaxation response in stress related diseases*. Med Sci Monit. 2003; 9(2): RA23-34.
- Fine, Thomas; Mills, Donna; Turner, John Jr. *Differential Effects of Wet and Dry Floatation REST on EEG Frequency and Amplitude*. 1993
- Fine TH, Turner JW. *The effect of brief restricted environmental stimulation therapy in the treatment of essential hypertension*. Behav Res Ther. 1982; 20: 567-70.
- Forgays DJ, Belinson MJ. *Is floatation isolation a relaxing environment?* J Environ Psychol. 1986; 6: 19-34.
- Greenleaf JE. *Physiological responses to prolonged bed rest and fluid immersion in humans: brief review*. J Appl Physiol. 1984; 57(3): 619-33.
- Justice, T.; Barabasz, A.; and Trevisan, M. *Effects of Six Hours of Lighted and Light-Free Dry Floatation REST on Changes in Absorption and Mood State*. Washington State University, Pullman, WA
- Kjellgren A, Lyden F, Norlander T. *Sensory isolation in floatation tanks: altered states of consciousness and effects on well-being*. The Qual Report. 2008; 13(4): 636-56.
- Heron, W. H. Bexton, and D.O. Hebb (1953): *Cognitive Effects of a Decreased Variation to the Sensory Environment*. American Psychologist 8, 366.
- Norlander T, Kjellgren A, Archer T. *The experience of floatation-REST as a function of setting and previous experience of altered state of Consciousness*. Imagin, Cogn Person. 2001; 20: 161-78.
- Olney CM. *The effect of therapeutic back massage in hypertensive persons: a preliminary study*. Bio Res Nurs. 2005; 7 (2): 98-105.
- Suedfeld P, Roy C, Landon PB. *Restricted environmental stimulation therapy in the treatment of essential hypertension*. Behav Res Ther. 1982; 20: 533-559.
- Turner, John Jr.; Gerard, William; Hyland, John; Nieland, Pamela, Fine, Thomas: *Effects of Wet and Dry Floatation on Blood Pressure and Plasma Cortisol*. 1985
- Clinical and Experimental Restricted Environmental Stimulation: New Developments and Perspectives*. pp. 239-248. New York: Springer-Verlag New York Inc."

CONCEPT
Plus Communications

IMAGES
Silvio Gioia

POST PRODUCTION
Andrea Benacchio

RENDER
nudesign

PRINTING
Litografica Editrice Saturnia



nuvola

FLOATING BEAUTY FORMULA

via Stazione 25
38030 Ziano di Fiemme (TN)
T. +39 0462 571881
info@nuvolaexperience.it
www.nuvolaexperience.it